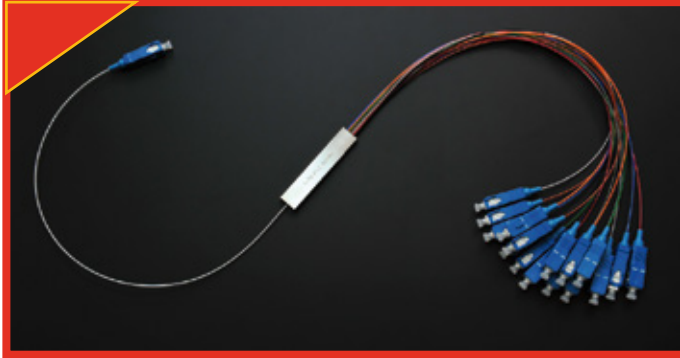


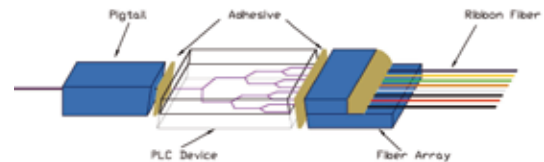
1XN & 2XN PLC SPLITTER



PLC- Planar Lightwave Circuit Splitter is a kind of power splitter based on the integrated quartz baseplate. There are 1xN and 2xN types. Types 1xN and 2xN SM PLC Splitters divide uniformly optical signals from one or two inputs to multiple outputs.

FEATURES

- Broadband Operation Wavelength
- Low Insertion Loss Low PDL
- Compact Design
- Good channel-channel uniformity
- High Reliability and Stability
- Pass ITUT-G.671, IEC 61300, Telcordia GR-1209-Core and GR-1221-Core Reliability Test
- Rohs Compliance

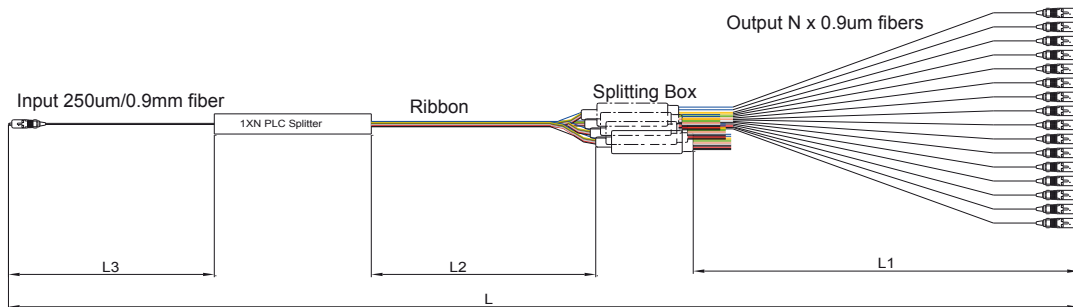


TECHNICAL SPECIFICATION

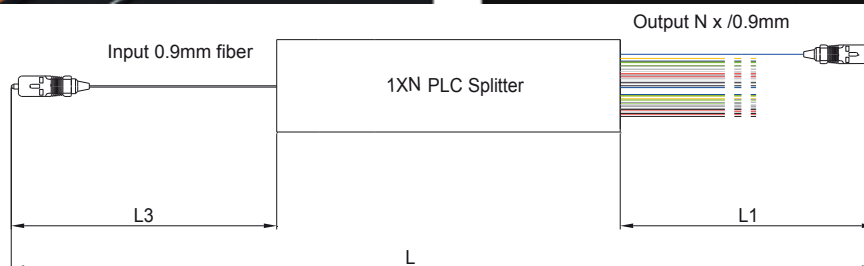
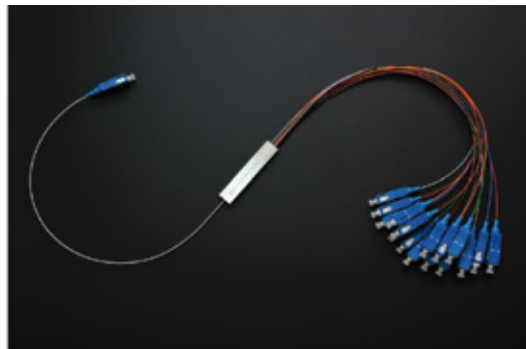
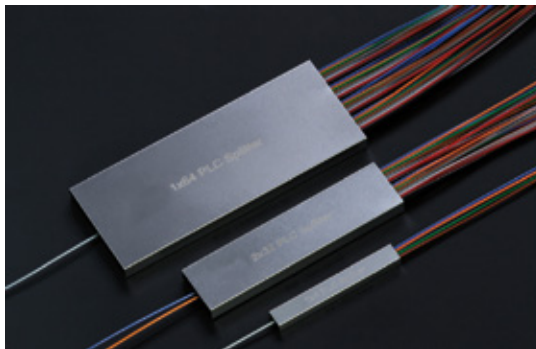
Operating Wavelength (nm)		1260 ~ 1650					
1XN PLC Splitter		1x2	1x4	1x8	1x16	1x32	1x64
Insertion Loss (dB)	Max	3.8	7.3	10.5	13.5	16.7	21.2
Loss Uniformity(dB)	Max	0.4	0.5	0.6	0.9	1.2	1.5
Return Loss(dB)	Min	55					
PDL(dB)	Max	0.2	0.2	0.3	0.2	0.25	0.3
2XN PLC Splitter		2x2	2x4	2x8	2x16	2x32	
Insertion Loss (dB)	Max	5.0	8.5	11.5	14.5	18.0	
Loss Uniformity(dB)	Max	1.2	1.2	1.4	1.8	2.3	
Return Loss(dB)	Min	55					
PDL(dB)	Max	0.3	0.3	0.3	0.4	0.4	
Fiber Type		ITU G652D or G657 A					
Temperature Stability (-40 ~ +85 °C) (dB)	Max	0.5					
Operating Temperature (°C)		-40 ~ +85					
Storage Temperature (°C)		-40 ~ +85					

PLC SPLITTER TYPE AND PACKAGING

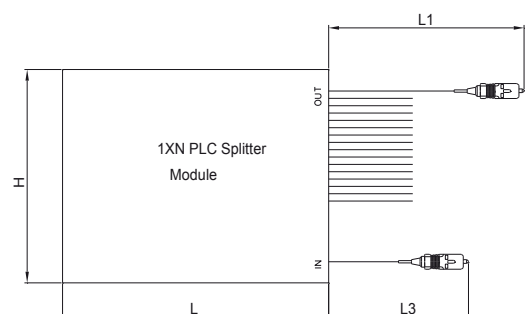
1 - BASIC PLC SPLITTER [BARE RIBBON TYPE]



2 - MINI MODULE TYPE PLC SPLITTER



3 - MODULE BOX TYPE



SPLITTER PACKAGING TYPE AND DIMENSION

Package Type & Size	Unit mm x mm x mm	1x2 1x4	1x8	1x16	1x32	1x64
I - Basic Packaging Metal Box	L*W*H	40*4*4	40*4*4	50*7*4	50*7*4	60*12*4
II - Mini Module Packaging Metal Box		50*7*4	60*12*4	80*12*4	80*20*6	100*40*6
III - Module Packaging Plastic Box		100*80*10	100*80*10	100*80*10	140*114*18	140*114*18

Package Type & Size	Unit mm x mm x mm	2x2 2x4	2x8	2x16	2x32	2x64
I - Basic Packaging Metal Box	L*W*H	50*4*4	50*4*4	60*7*4	60*7*4	
II - Mini Module Packaging Metal Box		60*7*4	80*12*4	80*12*4	80*20*6	
III - Module Packaging Plastic Box		100*80*10	100*80*10	100*80*10	140*114*18	

ORDERING INFORMATION

PART NUMBER:

OUT-PLC-A-1 x 8-A-09/L3-LCA-09/L1/L2-LCA-1

① ② ③ ④ ⑤ ⑥ ⑦ ⑧

① Input channel	1 , 2 Channel
② Output channel	2, 4, 8, 16, 32, 64 Channel
③ Fiber type	N: G652D (omitted), A: G657A, S: Other specified
④ Input fiber/length	B: 250um bare fiber, 09: 900um loose tube, 2: 2mm loose tube / L3 (cm)
⑤ Input connector type/polishing	SCP: SC/PC, SCA: SC/APC, LCP: LC/PC, LCA: LC/APC, E2P: E2000/PC, E2A: E2000/APC or N: no connector
⑥ Output fiber/length	B: 250um bare fiber, 09: 900um loose tube, 2: 2mm loose tube / L1/L2 (cm)
⑦ Output connector type/polishing	SCP: SC/PC, SCA: SC/APC, LCP: LC/PC, LCA: LC/APC, E2P: E2000/PC, E2A: E2000/APC or N: no connector
⑧ Packaging type	1: Basic (ribbon stainless mini-module), 2: mini Module (ribbon stainless mini-module), 3: Module (plastic box)