



IP-PDU

Network Power Manager Distribution Unit



Intelligent



Safe



Green



IP PDU

A Vital Requirement for Data Center

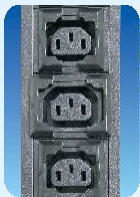
What is SUM?

Sustainable: CLEVER Silver SUM PDU provides different functions in different stage of business by using hot-swap function modules.

Upgradeable: easy to upgrade a basic PDU to a local metered PDU and then to a IP monitored PDU

Maintainable: safe and reliable in-field maintenance without affecting the outlet

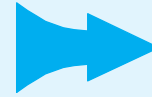
SUM PDU Growing Functionality



Basic
(B-PDU)



Basic
metered
(BM-PDU)



Basic
Monitored
(IP-PDU)

Silver SUM PDU Family	B-PDU	BM-PDU	IP-PDU
Max current up to 63A	√	√	√
Voltage: 100~240V, 200~400V	√	√	√
Multiple outlet configuration	√	√	√
Surge protection - optional	√	√	√
Circuit breaker - optional	√	√	√
Three phase 16A/32A	√	√	√
Locking outlets	√	√	√
Tool - less mounting	√	√	√
Hot - swap local ammeter		√	√
IP access			√
SNMP management			√
Environment monitoring			√

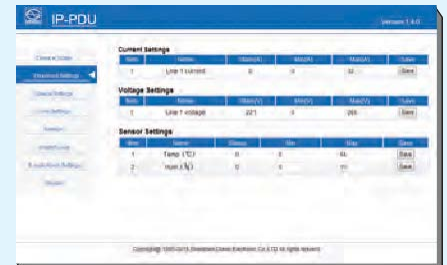
IP-PDU provides the following functions via Web interface

Monitor input current, voltage, power, energy consumption and power factor;

Manage totally 5 PDUs with single IP through daisy-chain; Monitor rack environment via external temperature & humidity sensor;

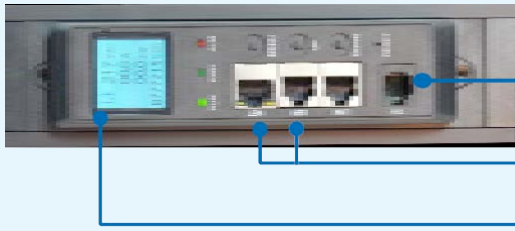
Automatic email and SNMP trap when alarm occurs;

Firmware remote upgradable .



Rack space	Input Volt	Rated current	Input plug	#of bank	Outlet	CLEVER Silver SUM Standard PDU Models		
						B-PDU	BM-PDU	IP-PDU
1U/0U	100-240V	16A	IEC320 C20	1x16A	5xIEC320 C13	SUM CP H1105-0500	SUM BM H1105-0500	IP H1105-0500
0U	100-240V	16A	IEC320 C20	1x16A	9xIEC320 C13	SUM CP 1109-0900	SUM BM 1109-0900	IP 1109-0900
0U	100-240V	16A	DIN49441	1x16A	9xDIN49440	SUM CP 1109-F0900	SUM BM 1109-F0900	IP 1109-F0900
0U	100-240V	16A	DIN49441	1x16A	9xNF C61-314	SUM CP 1109-E0900	SUM BM 1109-E0900	IP 1109-E0900
0U	100-240V	15A	NEMA5-15P	1x15A	9xNEMA5-15R	SUM CP 1109-B0900	SUM BM 1109-B0900	IP 1109-B0900
0U	100-240V	32A	IEC60309 32A	2x16A	21xC13, 3xC19	SUM CP 1324-2103	SUM BM 1324-2103	IP 1324-2103
0U	100-240V	32A	IEC60309 32A	2x16A	18xC13, 6xC19	SUM CP 1324-1806	SUM BM 1324-1806	IP 1324-1806
0U	100-240V	32A	IEC60309 32A	2x16A	20xC13, 4xC19	SUM CP 1324-2004	SUM BM 1324-2004	IP 1324-2004
0U	100-240V	32A	IEC60309 32A	2x16A	26xC13, 6xC19	SUM CP 1332-2606	SUM BM 1332-2606	IP 1332-2606
0U	100-240V	32A	IEC60309 32A	2x16A	30xC13, 6xC19	SUM CP 1336-3006	SUM BM 1336-3006	IP 1336-3006
0U	100-240V	63A	IEC60309 63A	4x16A	24xC13, 8xC19	SUM CP 1632-2408	SUM BM 1632-2408	IP 1632-2408
0U	200-400V	3x16A	IEC60309 16A	3x16A	21xC13, 3xC19	SUM CP 3124-2103	SUM BM 3124-2103	IP 3124-2103
0U	200-400V	3x16A	IEC60309 16A	3x16A	20xC13, 4xC19	SUM CP 3124-2004	SUM BM 3124-2004	IP 3124-2004
0U	200-400V	3x16A	IEC60309 16A	3x16A	18xC13, 6xC19	SUM CP 3124-1806	SUM BM 3124-1806	IP 3124-1806
0U	200-400V	3x16A	IEC60309 16A	3x16A	24xC13, 6xC19	SUM CP 3130-2406	SUM BM 3130-2406	IP 3130-2406
0U	200-400V	3x16A	IEC60309 16A	3x16A	30xC13, 3xC19	SUM CP 3133-3003	SUM BM 3133-3003	IP 3133-3003
0U	200-400V	3x32A	IEC60309 32A	3x32A	21xC13, 3xC19	SUM CP 3324-2103	SUM BM 3324-2103	IP 3324-2103
0U	200-400V	3x32A	IEC60309 32A	3x32A	18xC13, 6xC19	SUM CP 3324-1806	SUM BM 3324-1806	IP 3324-1806
0U	200-400V	3x32A	IEC60309 32A	3x32A	20xC13, 4xC19	SUM CP 3324-2004	SUM BM 3324-2004	IP 3324-2004
0U	200-400V	3x32A	IEC60309 32A	3x32A	24xC13, 6xC19	SUM CP 3330-2406	SUM BM 3330-2406	IP 3330-2406
0U	200-400V	3x32A	IEC60309 32A	3x32A	30xC13, 3xC19	SUM CP 3333-3003	SUM BM 3333-3003	IP 3333-3003

Introduction of monitoring and controlling module



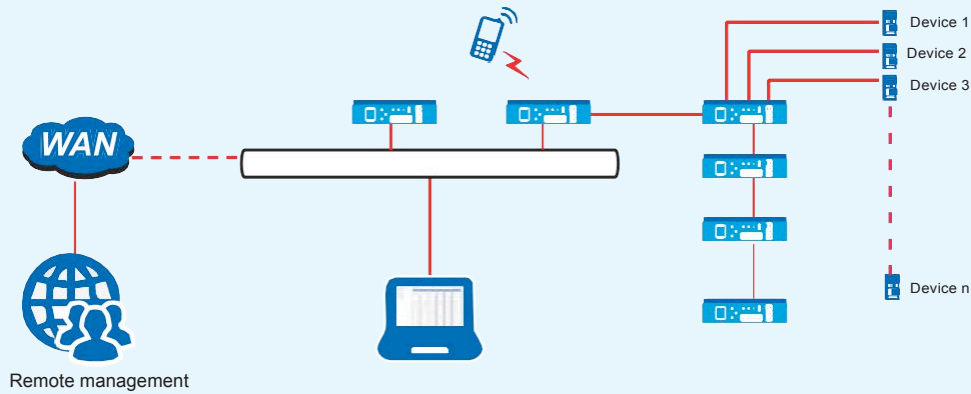
SENSOR: to connect external sensor extension box which has 2 temperature & humidity sensor port, 2 door sensor port, 1 water sensor port and 1 smoke sensor port.

NET: for Ethernet access(Http/Https), support remote data backup.

SER: for serial access, MODBUS protocol.

LCD DISPLAY: display electrical parameters like amp, volt, kW, kWh, power factor etc.

Daisy chain drawing of Intelligent IP-PDU



Accurate monitoring of Input voltage/Load current/Power/Energy consumption

English | 中文

Overview
Device Settings
User Management
Network
Data Graphing
Logs
System

Device Information

Device Name:RPDU1

Device Series:RPDU(D)

Working Status:Normal

Level:Outlet monitoring & controlling

uptime:0days/0hour/0minute

(L)Output Status

Total Load:0.0A

Total Voltage:216V

Power Factor:0.00

Power:0.00kW

Total Energy:4.6kWh

Line1 Line2 Line3

Device Select: RPDU1

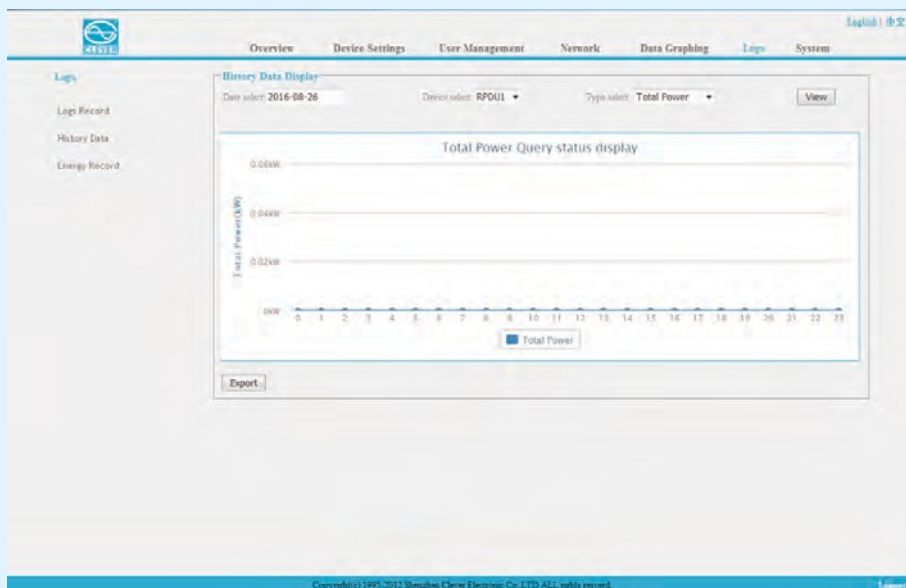
Item	Name	State	Current(A)	Power(kW)	Power Factor	Critical
1	Output1	ON	0.0	0.000	0.00	Normal
2	Output2	ON	0.0	0.000	0.00	Normal
3	Output3	ON	0.0	0.000	0.00	Normal
4	Output4	ON	0.0	0.000	0.00	Normal
5	Output5	ON	0.0	0.000	0.00	Normal
6	Output6	ON	0.0	0.000	0.00	Normal
7	Output7	ON	0.0	0.000	0.00	Normal
8	Output8	ON	0.0	0.000	0.00	Normal
9	Output9	ON	0.0	0.000	0.00	Normal
10	Output10	ON	0.0	0.000	0.00	Normal
11	Output11	ON	0.0	0.000	0.00	Normal
12	Output12	ON	0.0	0.000	0.00	Normal
13	Output13	ON	0.0	0.000	0.00	Normal
14	Output14	ON	0.0	0.000	0.00	Normal
15	Output15	ON	0.0	0.000	0.00	Normal
16	Output16	ON	0.0	0.000	0.00	Normal
17	Output17	ON	0.0	0.000	0.00	Normal
18	Output18	ON	0.0	0.000	0.00	Normal
19	Output19	ON	0.0	0.000	0.00	Normal
20	Output20	ON	0.0	0.000	0.00	Normal
21	Output21	ON	0.0	0.000	0.00	Normal
22	Output22	ON	0.0	0.000	0.00	Normal
23	Output23	ON	0.0	0.000	0.00	Normal
24	Output24	ON	0.0	0.000	0.00	Normal

Copyright(C) 1995-2012 Shenzhen Clayer Electronic Co.,LTD ALL rights reserved.
Logout

PDU Outlets can be freely grouped

Item	Name	Current(A)	Min(A)	Load(A)	Upper(A)	Max(A)	Save
1	Output1	0.0	0.0	0.0	10.0	16.0	Save
2	Output2	0.0	0.0	0.0	10.0	16.0	Save
3	Output3	0.0	0.0	0.0	10.0	16.0	Save
4	Output4	0.0	0.0	0.0	10.0	16.0	Save
5	Output5	0.0	0.0	0.0	10.0	16.0	Save
6	Output6	0.0	0.0	0.0	10.0	16.0	Save
7	Output7	0.0	0.0	0.0	10.0	16.0	Save
8	Output8	0.0	0.0	0.0	10.0	16.0	Save
9	Output9	0.0	0.0	0.0	10.0	16.0	Save
10	Output10	0.0	0.0	0.0	10.0	16.0	Save
11	Output11	0.0	0.0	0.0	10.0	16.0	Save
12	Output12	0.0	0.0	0.0	10.0	16.0	Save
13	Output13	0.0	0.0	0.0	10.0	16.0	Save
14	Output14	0.0	0.0	0.0	10.0	16.0	Save
15	Output15	0.0	0.0	0.0	10.0	16.0	Save
16	Output16	0.0	0.0	0.0	10.0	16.0	Save
17	Output17	0.0	0.0	0.0	10.0	16.0	Save
18	Output18	0.0	0.0	0.0	10.0	16.0	Save
19	Output19	0.0	0.0	0.0	10.0	16.0	Save
20	Output20	0.0	0.0	0.0	10.0	16.0	Save
21	Output21	0.0	0.0	0.0	10.0	16.0	Save
22	Output22	0.0	0.0	0.0	10.0	16.0	Save
23	Output23	0.0	0.0	0.0	10.0	16.0	Save
24	Output24	0.0	0.0	0.0	10.0	16.0	Save

Firmware system can generate graphs to show the status of past 24hours



CLEVER ITALY

Via degli Olmetti 39/d - 00060 - Formello (ROME) Italy

Tel. +39 06 90 40 5273

Fax. +39 06 90 40 0865

mail: info@cleveritaly.com

<http://www.cleveritaly.com>