

CLEVER Manager

(version 1.1.9)

User Manual

Menu

I . SOFTWARE OVERVIEW	3
II . FUNCTION DESCRIPTION	3
1. SOFTWARE PROGRAM ACCESS	3
1.1. Server Setting	4
1.2 Device setting	6
1.3 Server Room Layout Diagram.....	10
1.5 Server room information view:.....	15
1.6 Server room environment.	16
2.1 User sign in.....	16
2.2 Server room layout diagram	16
2.3 Server room information view:.....	18
2.4 Server room environment view:	18
2.5 Device list view:	19
2.6 Logs view:	20
IV. REMARKS AND NOTICES.....	20

I . Software Overview

Software name: CLEVER Manager 1.1.9

CLEVER Manager is a professional data center power management software originally developed by CLEVER Electronic. It's specially designed to provide real-time monitoring and management for the power distribution; cooling system and security environment in medium and small data centers. Clever Manager is easy to operate and extend with reliable, well-performed functions, which is an indispensable modern assistant helping the administrator rapidly and comprehensively understand the operating and environment status of the data center.

CLEVER Manager version 1.1.9 now supports all CLEVER intelligent PDUs like NPM-III、NPM-IV、EMS and ATS.

II . Function Description

- CLEVER Manager 1.1.9 is able to monitoring the NPM-III、NPM-IV、EMS and ATS devices in the data center, which enable the User to manage all devises locally and remotely.
- CLEVER Manager 1.1.9 monitors and analyze the operating and working environment to reflect the changing trends of the devices in data center.
- CLEVER Manager 1.1.9 records all the monitoring data and offers operating history with diagram and reports intuitively.

III. Access And Operation.

User can access the software by local software program and remote Web interface. Here are the detail instructions for these two access method respectively.

1. Software Program Access

In order to make sure the software can monitor and receive device information, user has to firstly access the web interface of device and enable the SNMP server. One of the Trap destination is required to be set as the IP address of User's PC. See diagram as below:

SNMP basic options

SNMP Agent: Enabled

GET Community: public

SET Community: private

TRAP Community: public

Error Trap Repeat Time: 30 seconds

Trap Destination 1: 192.168.1.115

Trap Destination 2: 0.0.0.0

SNMP Contact: No Contact

SNMP System Name: Clever NPM

SNMP Location: No Location

Apply

1-1

Click Restart in the menu bar after SNMP configuration to enter the restart interface

Restart

Click restart to reboot this device.

Restart

Click Restart and keep waiting for 45 seconds till the sign in dialog box pop up.

1.1. Server Setting

1.1.1 Start the the software program, click the "Server Setting" to enter this interface, See diagram 1-2 as below:

Menu Bar

Manager

Version: 1.1.9-E

SMTP server setting
SMTP account:
Password:
SMTP server:
Port:
Authentication: None
Test Save

WEB server setting
WEB port: 80
Active: ON
Action: Enable
Save

User information

Account	Permission	Edit	Tel	Admin
admin				

Edit user information
Account: admin Password: *****
Tel: Email: admin
Permission: Edit
Information:
Save

Outbox Server setting

User Account information

Web server setting

User Account edit section

1-2

1.1.2. SMTP server configuration:

- ▶ SMTP account: Outbox account.
- ▶ SMTP password: Outbox password.
- ▶ SMTP server: The server address of the outbox.
- ▶ SMTP port: Outbox level, regular mail port is 25.
- ▶ SMTP authorization: Select according to the authorization way.

Note: Make sure all the information is correct. User can take a testing after saving the configuration(receiving the mail means setting successfully)

1.1.3. Enable web setting:

- ▶ WEB port should be 80 and other number is not allowed.
- ▶ Active means the waiting time before the remote web access is activated.
- ▶ Enable or disable the web server through drop-down menu of Action

Note: Make sure to restart the software after configuration.

1.1.4. User account information edit section:

- ▶ Enter account information and click "Save" to finish adding new account. Up to 20 account with two level
 - Edit(administrator, all function access) and Unable Edit(view-only) is available.
- ▶ Select the account in the user account information section and modify the corresponding info in the user account edit section

Note:

The first account to be created should be Editable if there is on account existed. User name and password consist of only letter and number)

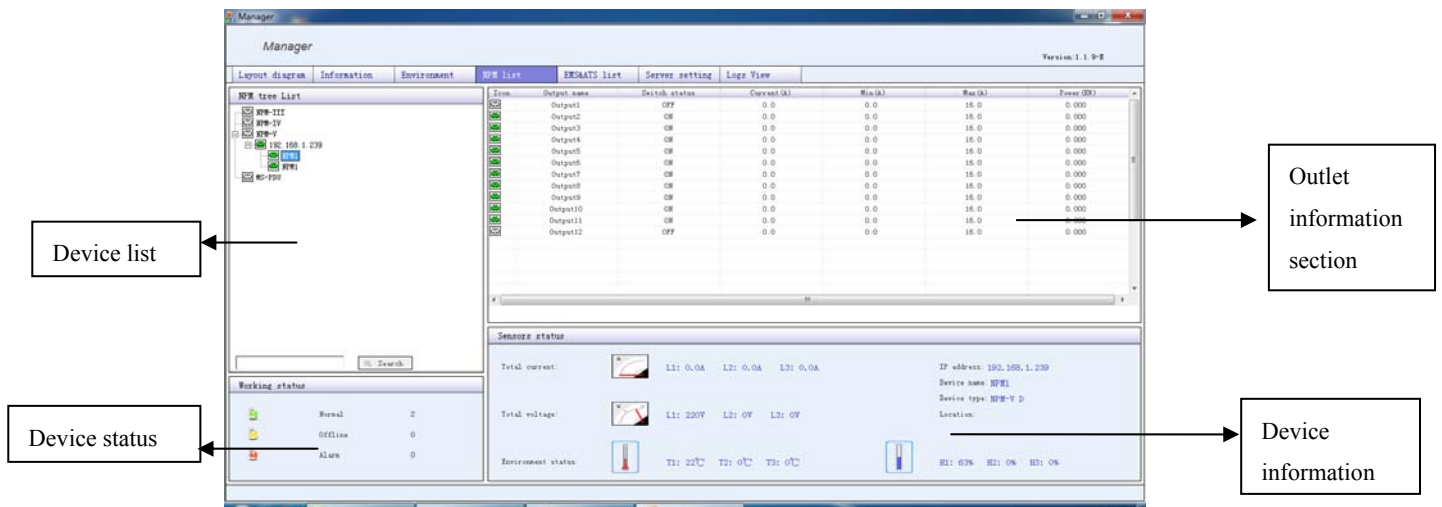
Unable edit type account can modify him/herself information.

1.1.5. User account information section:

- ▶ Select an account and right-click, the editable account can delete the exist account

1.2 Device setting.

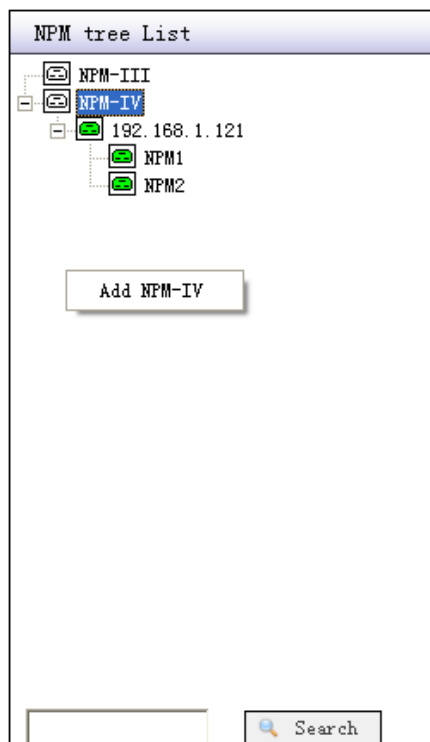
Click "NPM list" to enter device list interface, see diagram 1-3 as below:



1-3

1.2.1 Device list section:

Select the exist IP address or the blank part, right-click to "add device" or "delete device". See diagram 1-4 to add device as below:



Information make sure
✖

Device IP:

Get community:

Name: Password:

1-4

Note: Get community should be “public” as exactly the same as get community in diagram 1-1.

► Select the device under the IP address and right-click, User can "delete device" or "release alarm"

1.2.2. Outlet information section:



: The outlet is online and switched on



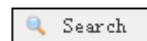
: The outlet is offline



: The outlet is alarming



: The outlet is switched off.



: Input the IP address to check the outlet information

1.2.3 Device status in all server room:



: all online devices



: all offline devices



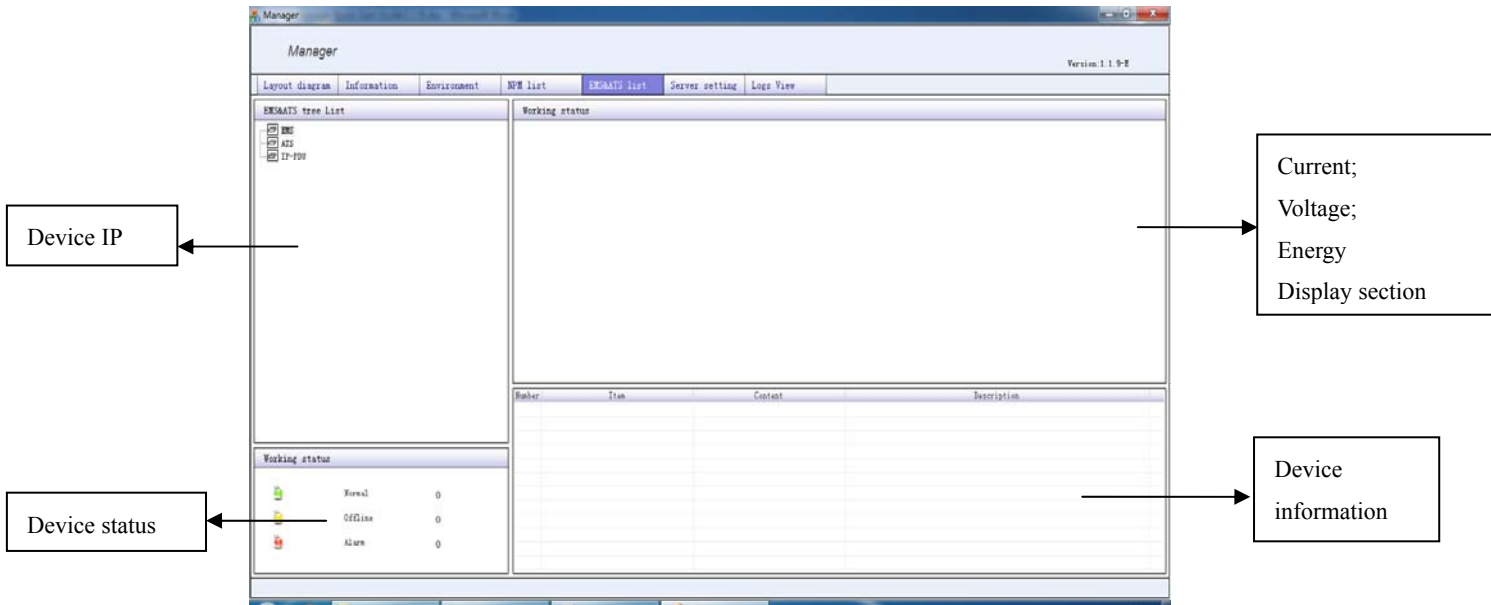
: all alarming devices.

1.2.4. Device information section:

This section display the input volage; load current; temperature; humidity; IP address and device name information

Note: The alarm status will maintain until the action was taking and alarm was released.

1.2.5 Enter the EMS/ATS device list interface by clicking EMS/ATS list as diagram 1-5 below:

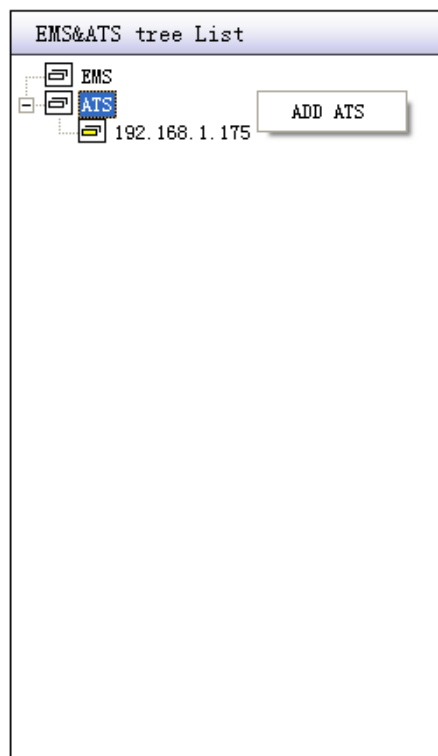


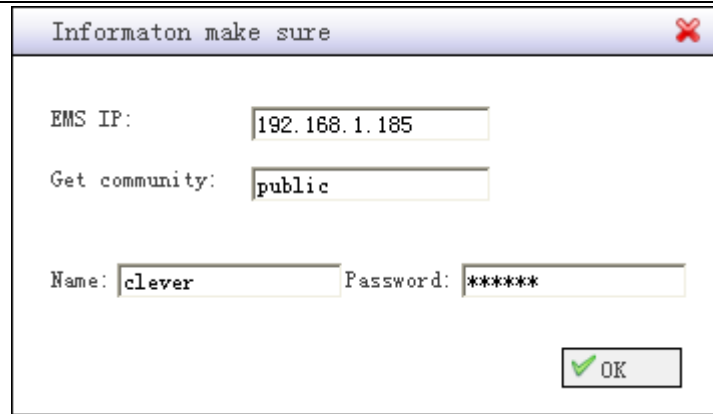
1-5

1.2.6 Device IP list section:

Select the device and right-click to "Add device" "Delete device" "Release alarm"

To add a device as below





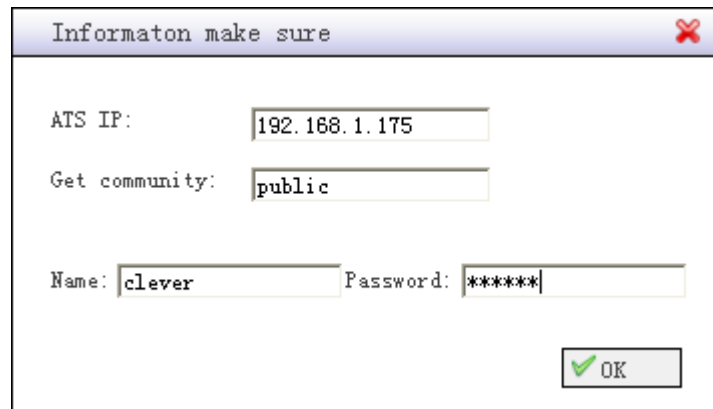
Informaton make sure

EMS IP: 192.168.1.185

Get community: public

Name: clever Password: *****

OK



Informaton make sure

ATS IP: 192.168.1.175

Get community: public

Name: clever Password: *****

OK

1-6

1.2.7 Device status in all server room:



: all online devices



: all offline devices



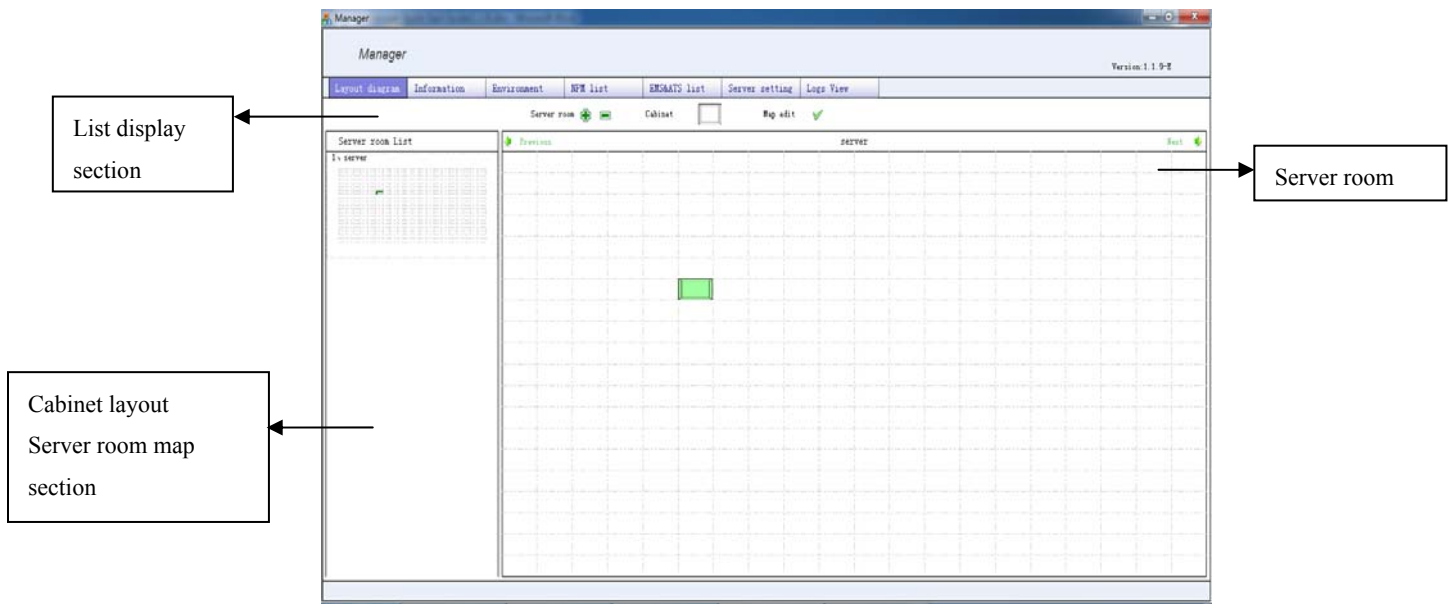
: all alarming devices.

1.2.8 Device information section:

Select the device, its corresponding volage/current; device number; IP address and status will be display in the device information section.






1.3 Server Room Layout Diagram


After adding the device to list, user can add the device into the cabinet in the server room map so the administrator will be able to find the device location easily. See sever room map as below 1-7




1-7

1.3.1 List display section:

-  : Click and enter corresponding information in the pop up dialog box to add new server room;
-  : Click and enter corresponding information in the pop up dialog box to delete new server room;
-  : Stand for cabinet
-  : When the cross icon displayed, user can NOT add cabinet; save the map or configure the PDUs listed;
-  : When the tick icon displayed, user can add or move cabinet; save the map and PDU configurations. Click the same icon to change the edit status.

Click  to add server room, the following dialog box will pop up:

Information make sure


Add a new server room

Server name:

Name: Password:

1-8

1.3.2 Server room name display:

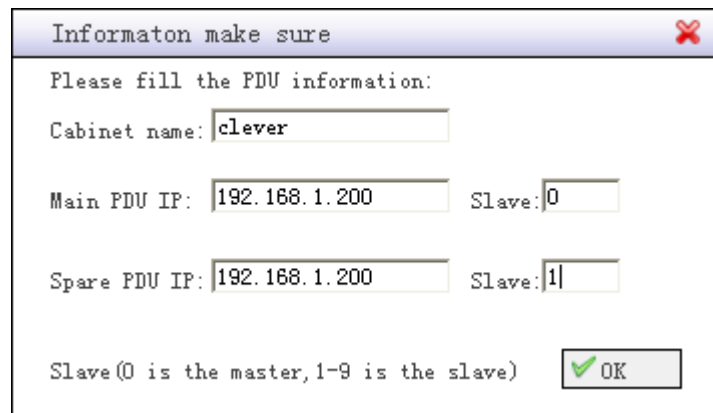
Click "Previous" or "Next" to switch from different server room to view the server room layout and device status

The name of the sever room is displayed in the middle.

1.3.3 Cabinet layout/Server room map section:

: Online devices : Offline devices : Alarming devices;

- ▶ The letters on the cabinet means the name of the cabinet.
- ▶ Right-click in the map section to add new cabinets or save map, the dialog box to add new cabinet is as below diagram 1-9:



1-9

- ▶ Click OK after enter all this information, the cabinet will move with the mouse; right-click and lock the position of this cabinet

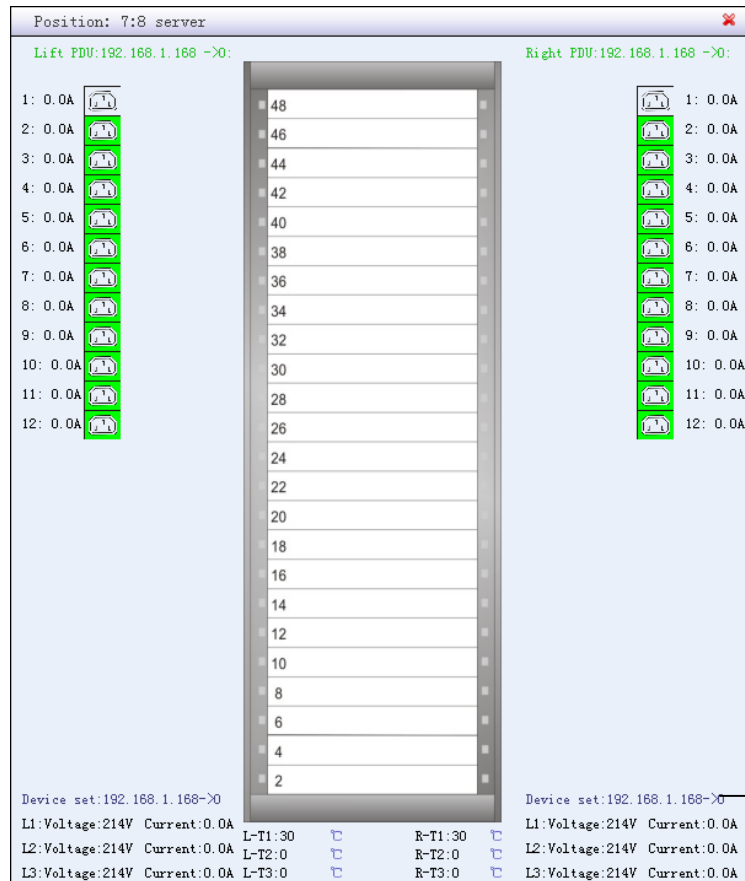
Note:

User can configure two PDUs in one cabinet. The primary/Main PDU and the secondary/Spare PDU.

Please enter number from 0 to 9 in the Slave option. 0 stand for the Master; 1-9 stand for the Slave that connected to the Master of this IP address.

Right-click each cabinet in the server room map to move; lock or delete cabinet.

- ▶ Double-cleck each cabinet to "add device" "delete device" and "Switch on/off outlet" as below:



Add device:

Right-click the rack to add devices in the rack as below:

Informaton make sure

Add a device:

Main PDU port: Spare PDU port:

Position: U Height: U

Name: Password:

☒ OK

1-11

PDU port: The primary or secondary PDU port to feed the device;

Position: the position of the device in the cabinet/rack;

Height: 1U or 2U device;

Delete device:

Right-click in the rack in diagram 1-10 to select "Delete device", enter the device position and account information to delete device

Switch on/off the outlet:

Click the outlet to switch on/off it in diagram 1-10, the pop-up dialog is as below:

Informaton make sure
✖

Main port:Output 6 status:0.0A (0.0-0.0)

Order (ON/OFF):

SET community:

Name: Password:

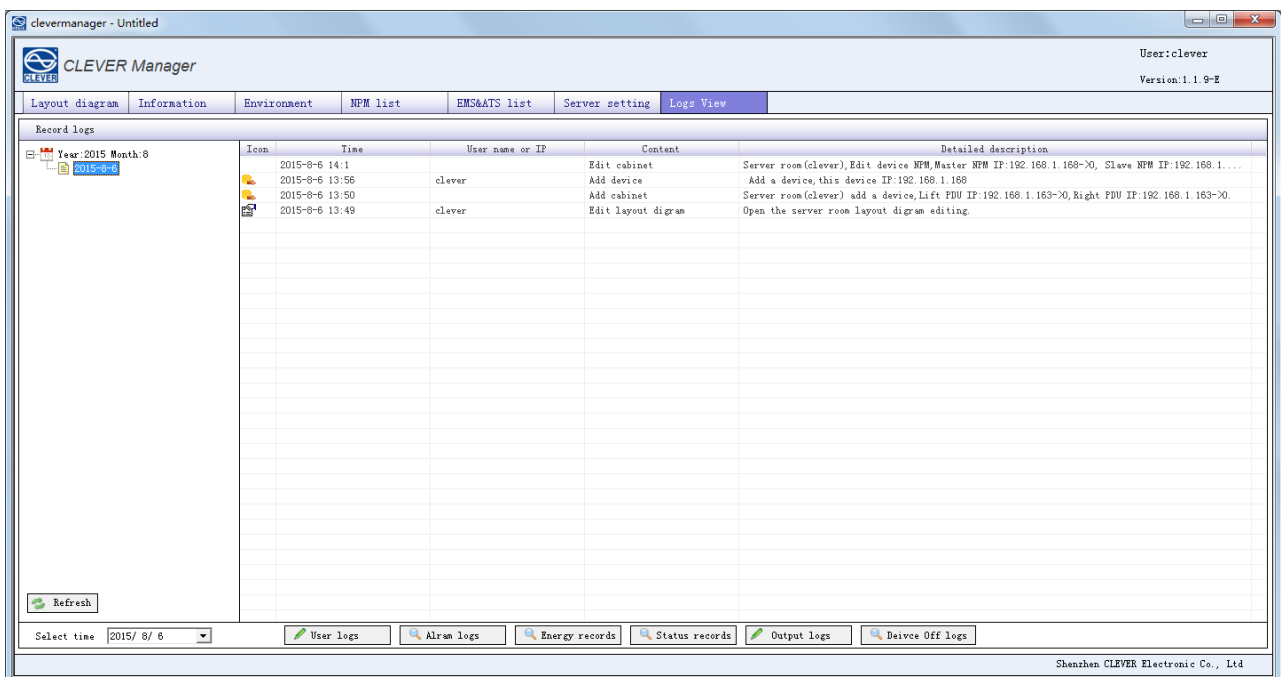
1-12

Note: The corresponding outlet will be displayed in red when there is a alarm.

The Set community option should be "private", Click OK to switch on/off the outlet after entering all information.

1.4 Event Logs View

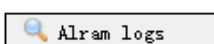
Click "Logs View" to enter the interface as below:

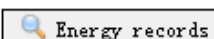


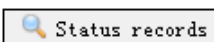
1-13

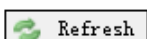
 : Click to refresh the event logs;

Select time : To view the logs according to specified time;

 : View the current User logs;

 : Click to view the alarm logs at specified time;

 : Power consumption records;

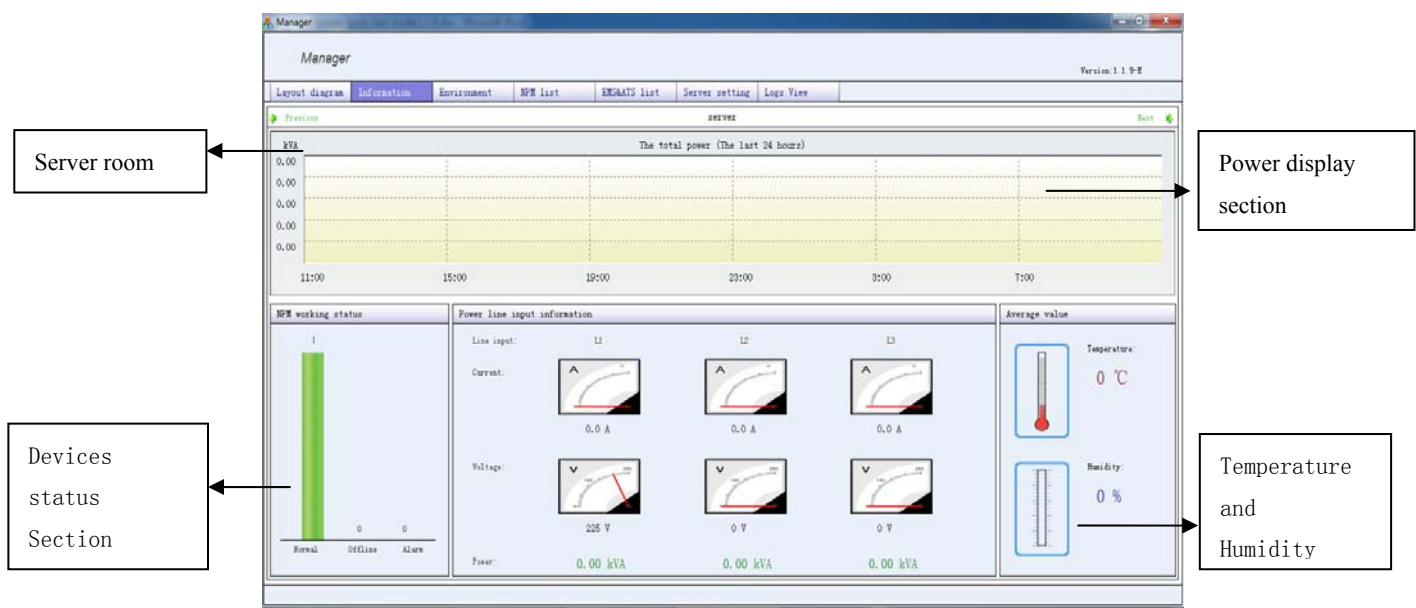
 : Device status records including the voltage; current; temperature; humidity and etc.

Time:
Device IP:
Slave:
Type:

If you need to export status log, you need the following Time-2, as the end of time, fill in the name of the state of the log click Export to export success prompted box prompts. Status log stored in CleverManager-C folder.

1.5 Server room information view:

Click "Information" to enter one of the server room interface as following:






1-16

► Server room section:

Click "Previous" or "Next" to view device status in difference sever room

Device status section:

 means the online devices;  means the offline devices;  means alarming devices.

► Power display section:

The graph shows the total power information in this server room.

► Temperature and humidity section:

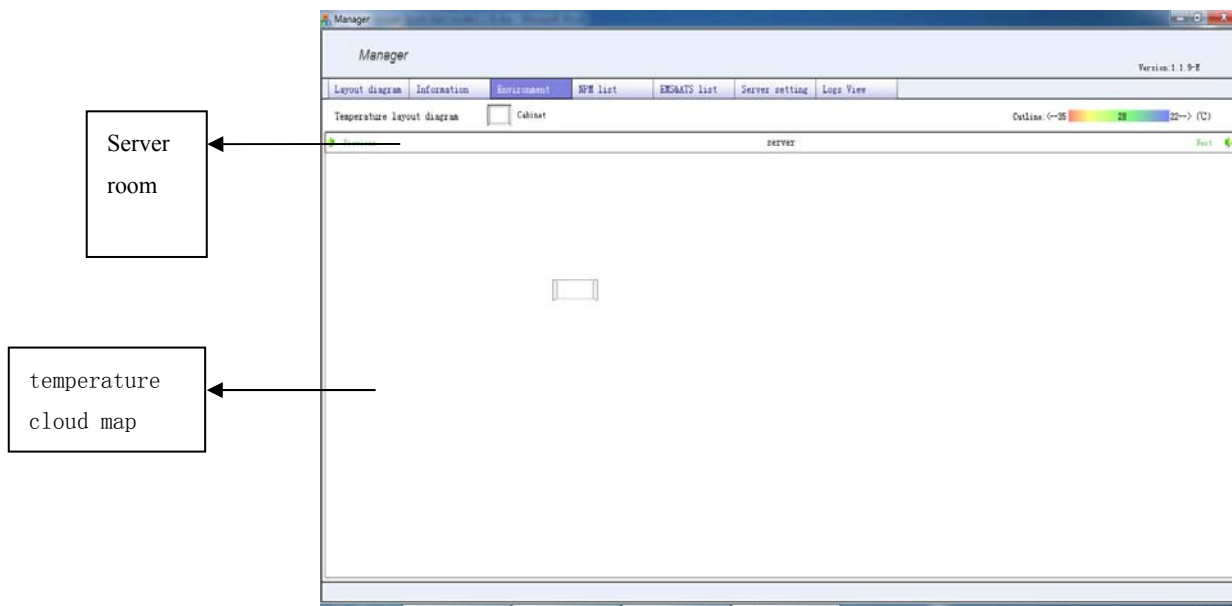
The average temperature and humidity status will be displayed in this server room.

► The average output in the server room:

Display the voltage; current; power in the server room. The voltage is a average value, the current is the total current in the sever room. The Max current value change with the load current in server room. The sum of the power is the power displayed in the interface.

1.6 Server room environment.

Click "Environment" to enter the temperature cloud map interface as below:



1-17

2. WEB Access

2.1 User sign in

Note: Please make sure the Web Server is enabled before sign in. The Web Server setting please refer to "Software Program Access". The Google Chrome browser is recommend here.

The address of web access is the IP address of the PC which installed Clever Manager, enter User name and Password, click OK to sign in as below:



2-1

2.2 Server room layout diagram

After sign in, the home page would be the "layout diagram" as below:



2-2

The information will be as the same as the software program displayed. Click the cabinet and the following dialog box will pop up:

Work status

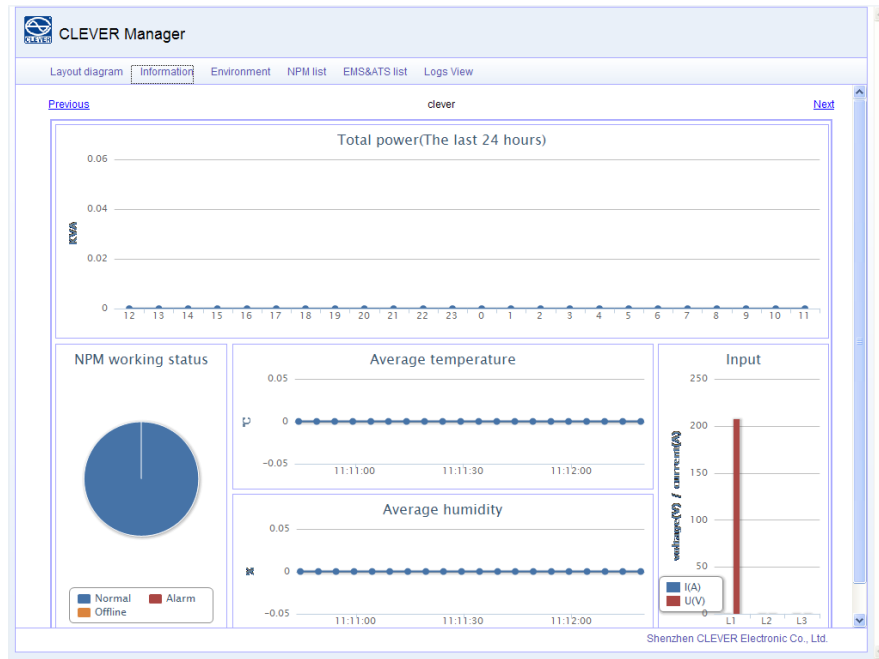
NPM working information		
Title	Content	Description
Main PDU	192.168.1.200->0	Normal
Output 1	ON	0.0A (min:0.0-max:0.0)
Output 2	ON	0.0A (min:0.0-max:0.0)
Output 3	OFF	0.0A (min:0.0-max:0.0)
Output 4	ON	0.0A (min:0.0-max:0.0)
Output 5	OFF	0.0A (min:0.0-max:0.0)
Output 6	ON	0.0A (min:0.0-max:0.0)
Output 7	ON	0.0A (min:0.0-max:0.0)
Output 8	ON	0.0A (min:0.0-max:0.0)
Spare PDU	->0	Offline
Output 1	ON	0.0A (min:0.0-max:0.0)
Output 2	ON	0.0A (min:0.0-max:0.0)
Output 3	OFF	0.0A (min:0.0-max:0.0)

2-3

The IP address; outlet status and Max/Min current value of the primary PDU and secondary PDU will be displayed like diagram above.

2.3 Server room information view:

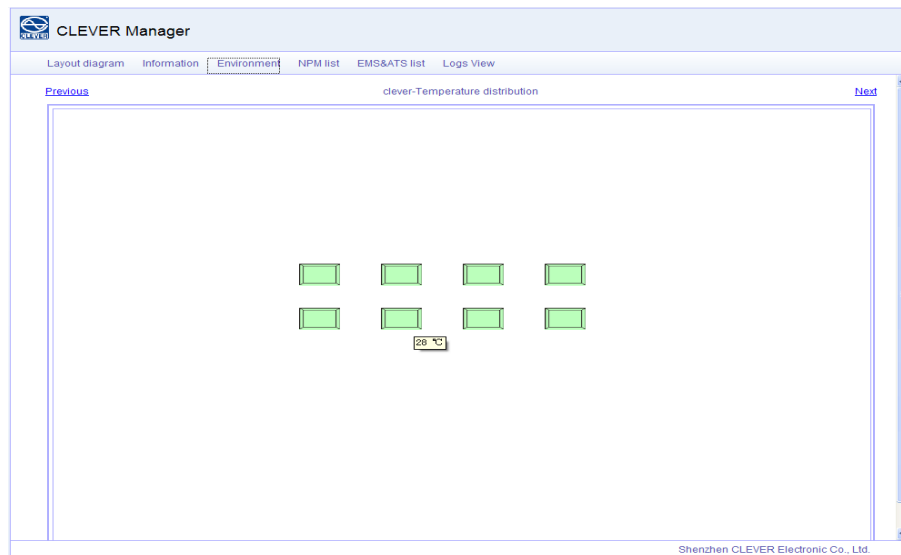
Click "Information" to view the device status as below:



2-4

2.4 Server room environment view:

Click "Environment" to view the temperature as below:

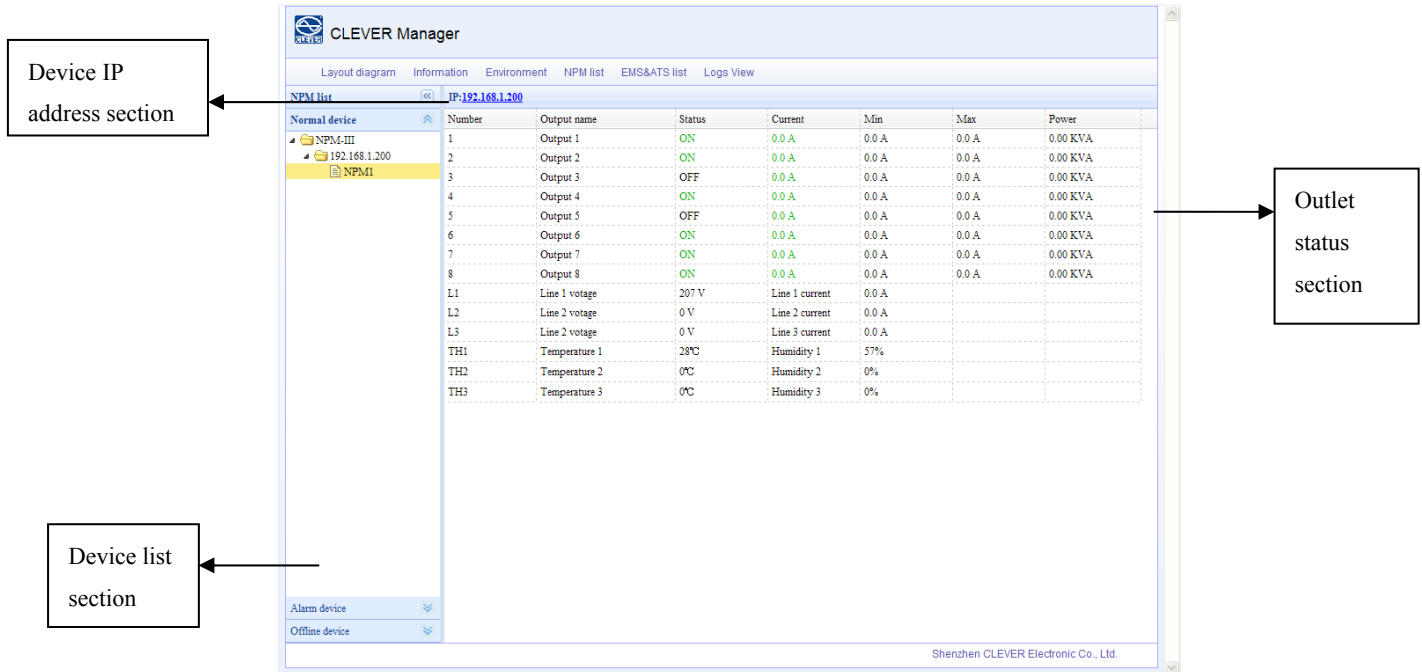


2-5

The temperature will displayed when the mouse move to the cabinet. Click "Previous" or "Next" to view the temperature changing.

2.5 Device list view:

Click "NPM list" or "EMS/ATS" to enter the device list interface as below:



Device IP address section

Device list section

Outlet status section

Number	Output name	Status	Current	Min	Max	Power
1	Output 1	ON	0.0 A	0.0 A	0.0 A	0.00 KVA
2	Output 2	ON	0.0 A	0.0 A	0.0 A	0.00 KVA
3	Output 3	OFF	0.0 A	0.0 A	0.0 A	0.00 KVA
4	Output 4	ON	0.0 A	0.0 A	0.0 A	0.00 KVA
5	Output 5	OFF	0.0 A	0.0 A	0.0 A	0.00 KVA
6	Output 6	ON	0.0 A	0.0 A	0.0 A	0.00 KVA
7	Output 7	ON	0.0 A	0.0 A	0.0 A	0.00 KVA
8	Output 8	ON	0.0 A	0.0 A	0.0 A	0.00 KVA
L1	Line 1 voltage	207 V	Line 1 current	0.0 A		
L2	Line 2 voltage	0 V	Line 2 current	0.0 A		
L3	Line 2 voltage	0 V	Line 3 current	0.0 A		
TH1	Temperature 1	28°C	Humidity 1	57%		
TH2	Temperature 2	0°C	Humidity 2	0%		
TH3	Temperature 3	0°C	Humidity 3	0%		

2-6

► Device list:

The device list are organized into three groups--- Online device group; Alarm device group and Offline device group.

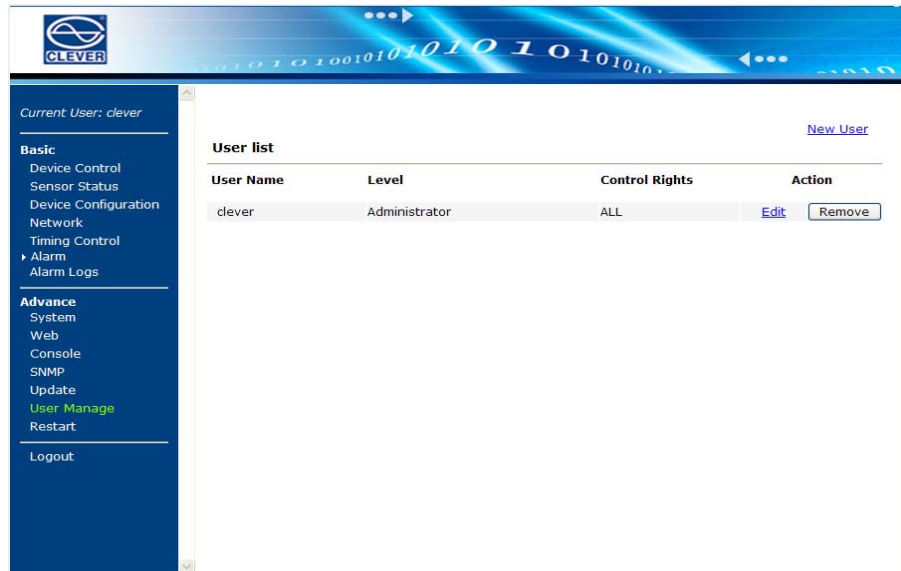
User can check the outlet status in different device list.

► Outlet status section:

The outlet status; input voltage; load current and sensor status of different device will be displayed. When there is a alarming on the outlet, the corresponding value will be in red.

► Device IP address section:

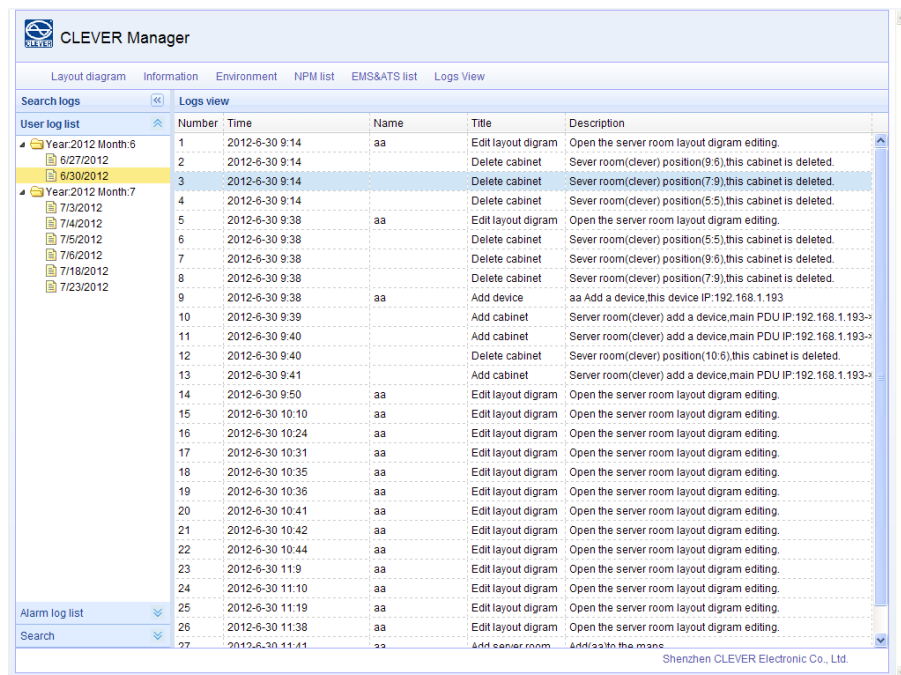
Click the IP address to enter the device management interface as below:



2-7

2.6 Logs view:

Click "logs view" to enter the logs interface as following:



2-8

Select a date, then click "User logs" or "Alarm log" to check the operating or alarm logs.

IV. Remarks and Notices.

1. Google Chrome; IE or Firefox browser is recommended.
2. Please make sure the Web Server is enabled before Web access. Keep the software program running during Web access.

3. The "trap destination" in the "SNMP" option of the device web interface should be the IP address of the PC to be installed the CLEVER Manager, otherwise the alarm logs can not be received.
4. The device status will not be back to normal until user released the alarm from the "device list".
5. The User name and password consist of 3 to 16 letters or numbers. Other character is not accepted.

**CLEVER ITALY s.r.l.**

Add: Via degli Olmetti 39/d - 00060 - Formello (ROMA) Italy

Tel: +39 06 90 40 5273 Fax: +39 06 90 40 0865

info@cleveritaly.com

<http://www.cleveritaly.com>
