



| Company profile

# Out Line S.R.L.

**Address:**

Via degli Olmetti 39D  
00060 Formello (RM)

**Phone:**

+39 0690405273

**Email:**

[info@outline.company](mailto:info@outline.company)

[www.outline.company](http://www.outline.company)

# About us

Out Line S.r.l.



Out Line S.r.l. DNA is based on thirty years of knowledge in energy and telecommunications technologies evolution. Its Head Quarter, warehouse and production is located near Rome, Italy, with strategic affiliates and consultants spread all over the world and Out Line personnel in China.

Initially aimed to the products development and reselling of leading companies portfolio, Out Line has evolved into the creation of innovative solutions as result of the networks evolution understanding and specific intimacy at R&D, Marketing, Procurement and Business End Users level.

In the Telecom and Energy markets such level of intimacy can generate design differentiation and those key success factors that lead to the competitive advantage in the respective field of competencies.



Fundamental policy of Out Line is to fulfill the requirements of customers beyond their expectations. In this context, our main goal is to design affordable, practical and reliable products with our extensive experience and knowledge, to produce them accurately and timely and to offer high-quality after-sale service.

All our employees strive to perform their duties correctly, excellently and timely during all processes and activities in accordance with the continuous improvement principle with respect to our environment.

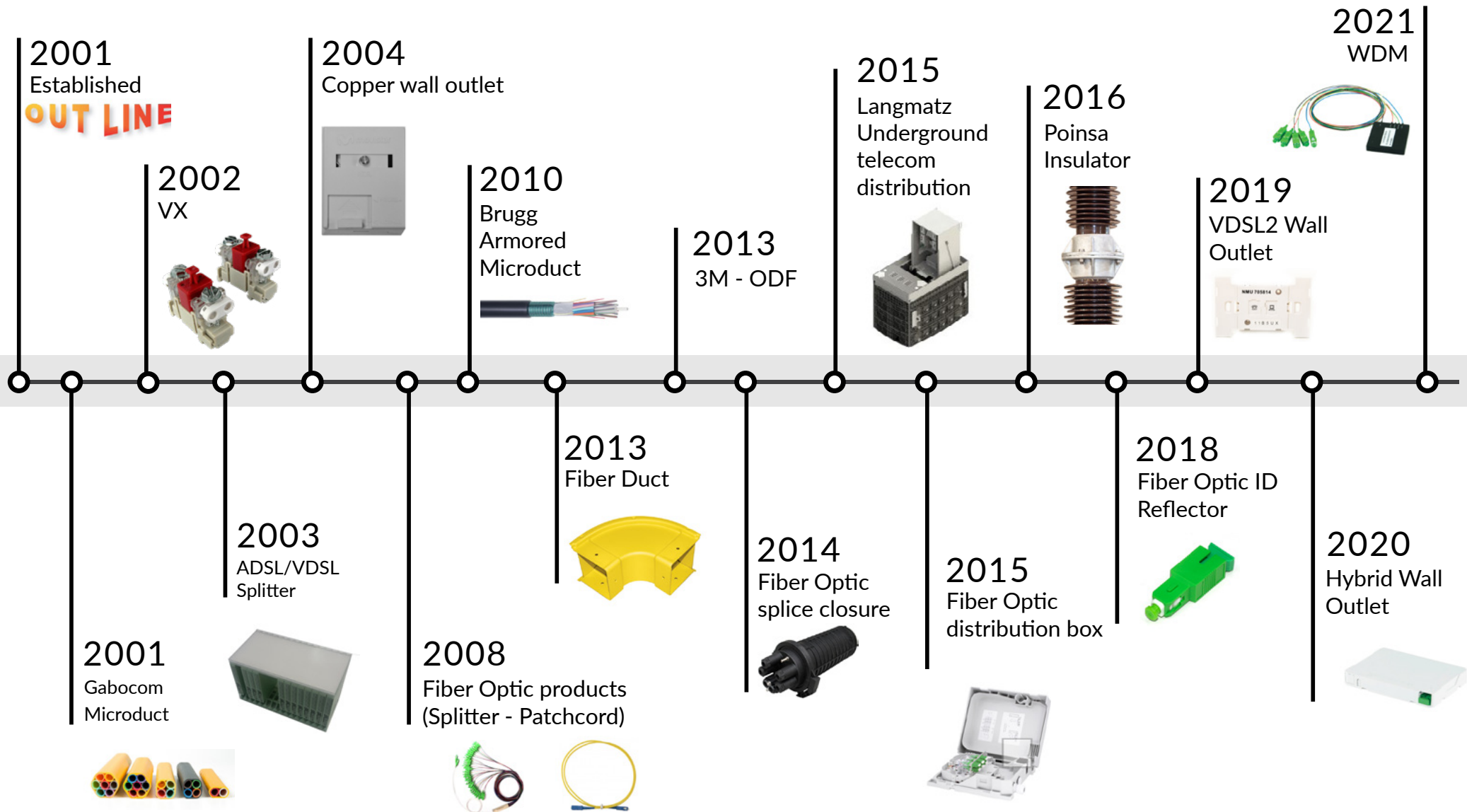
Our main principle is to work based on the motto 'All groups are responsible for quality and environmental efforts' by creating a participative, quality-oriented and open-for-change environment together with all our employees.

Accordingly, we consider that performing quick, efficient and economic productions in a way that ensures customer satisfaction in accordance with legislations and environmental awareness is the first and most significant indicator of success.

In the R&D laboratory of Formello (Rome), a team of technicians and designers can understand customer needs and develop a consistent proposal with demand and expectations, plus the added value that comes from high expertise and professionalism of the staff, while the warehouse, always at Formello, guarantees the delivery of standard products in a very short time.

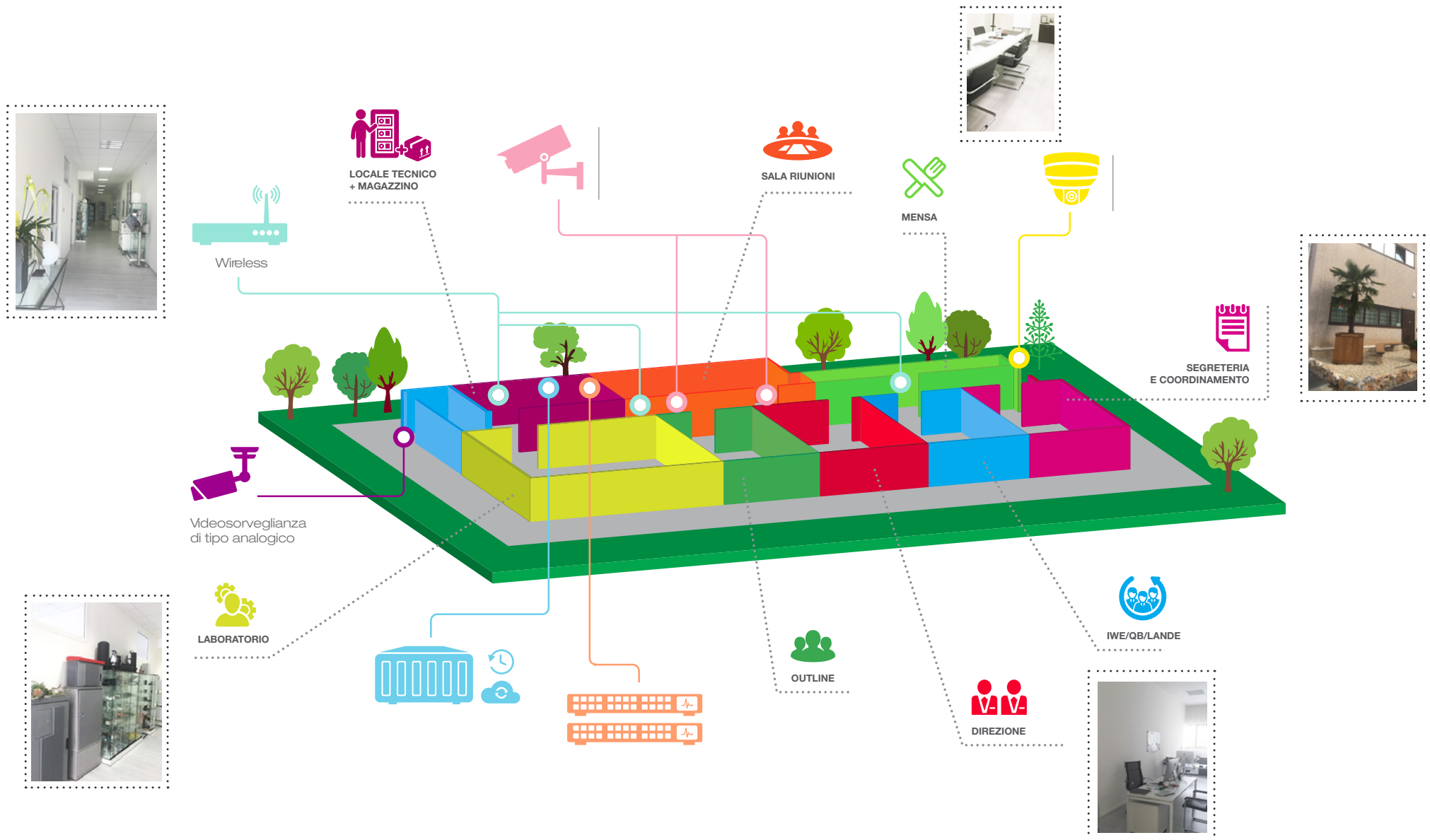
# Our History

Out Line S.r.l.



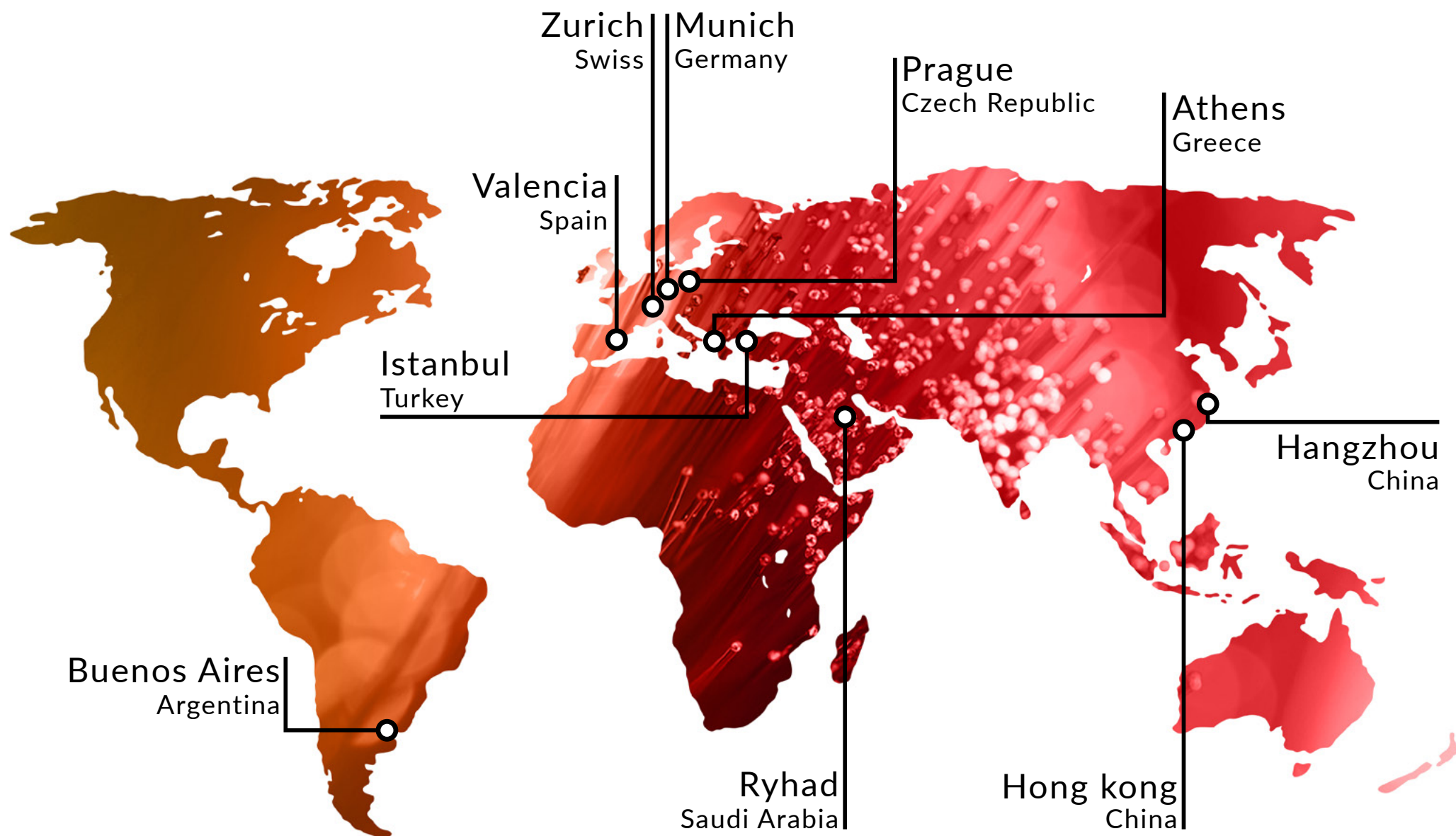
# Our Office

Out Line S.r.l.



# Our Contacts

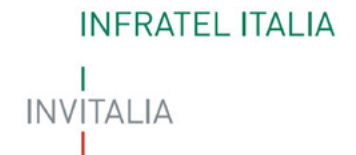
Out Line S.r.l.





# Clients

Out Line S.r.l.

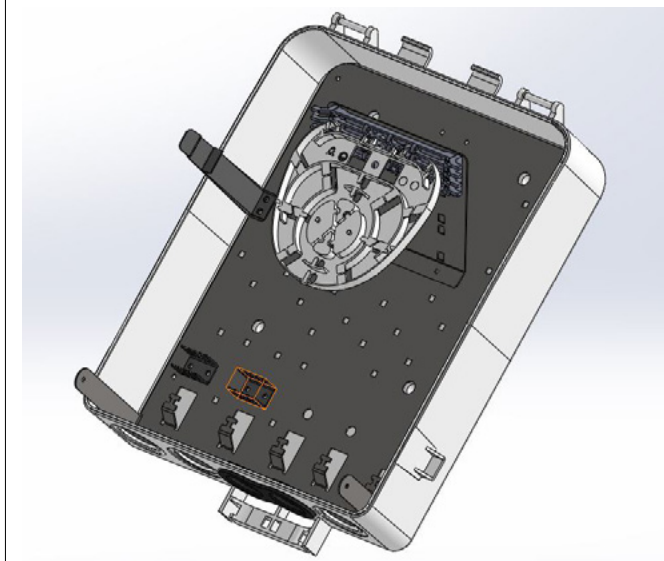
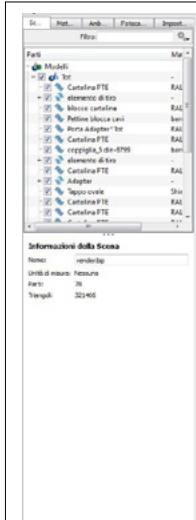


# Partners



# Our R&D Department

Out Line S.r.l.



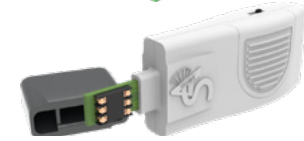
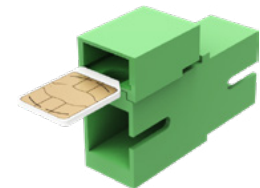
Connection Pair Box



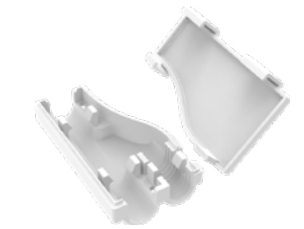
Smart RJ45 patch panel



F2F Wall Outlet



Smad

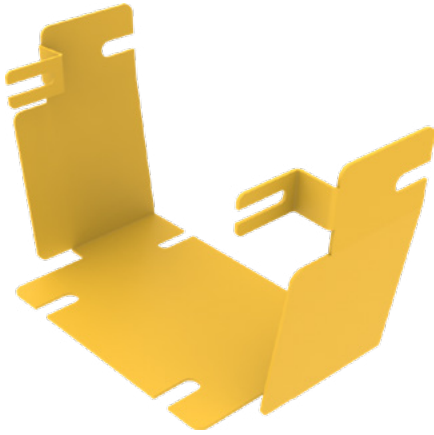


Cable Divider



# Our R&D Department

Out Line S.r.l.



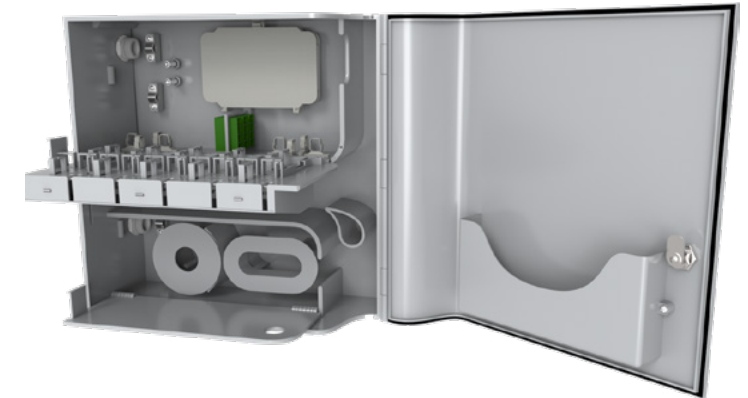
Fiber Duct Adapter Outline Panduit



Telecom Underground Distribution System



Splice Tray



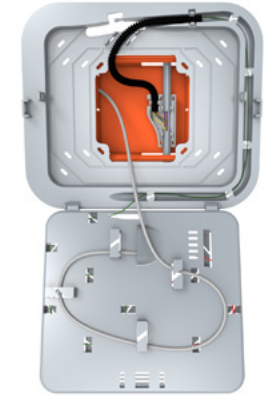
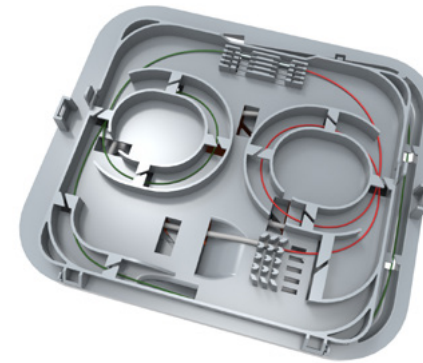
F2F Building Distribution Box

# Our R&D Department

Out Line S.r.l.



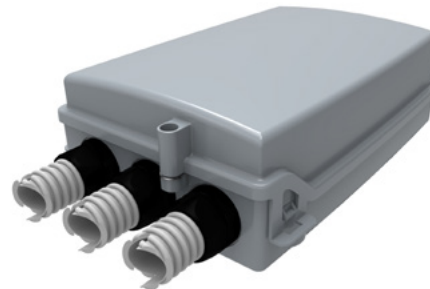
Holder for Splice Tray



Floor Distribution Box



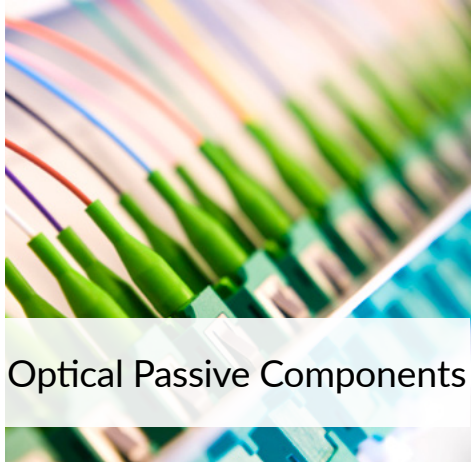
Wall Outlet 1FO



Building Distribution Box

# Our Products

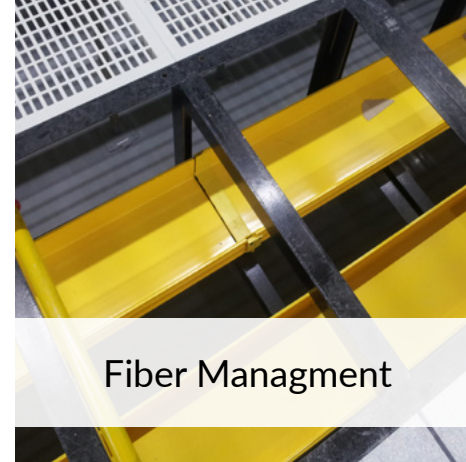
Out Line S.r.l.



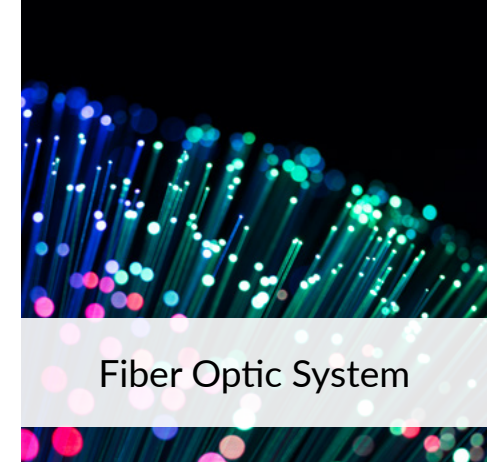
Optical Passive Components



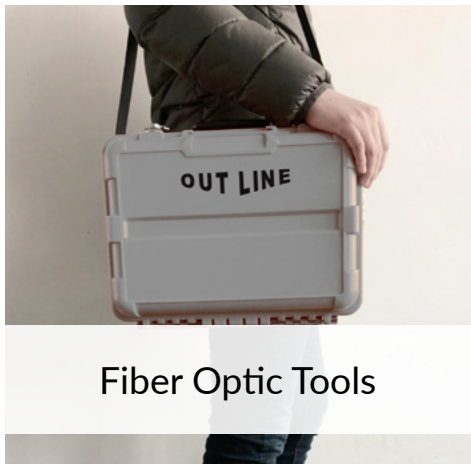
Fiber Optical Cable



Fiber Managment



Fiber Optic System



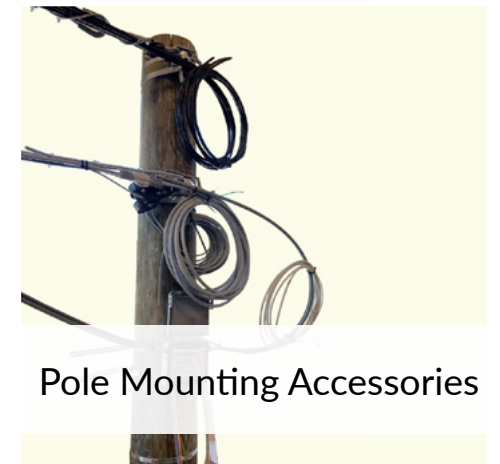
Fiber Optic Tools



Fiber Optic Instrument



Microducts



Pole Mounting Accessories





A close-up photograph of several optical fibers. The fibers have colorful outer jackets in shades of blue, red, purple, white, and yellow. They are terminated with green, cone-shaped connectors. The background is blurred, showing more fibers and components. A semi-transparent white banner is at the bottom.

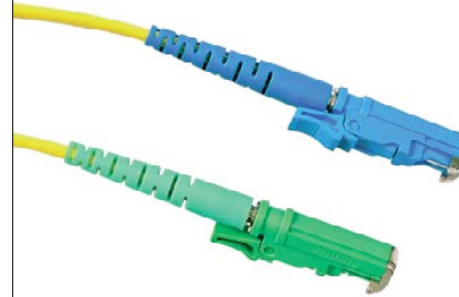
## Optical Passive Components





## Patch Cord

- FIBER OPTIC PATCHCORD
- FIBER OPTIC FAN-OUT AND TRUNK MPO PATCHCORD
- SPRING PATCHCORD
- PATCHCORD SC/APC – SC/APC
- OUT-T-PATCHCORD



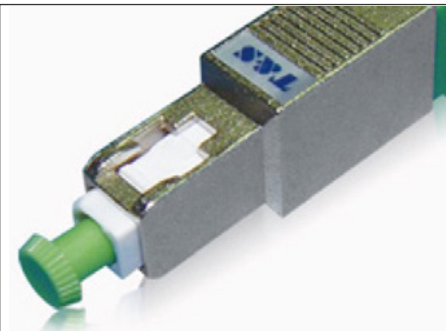
## Pigtail Connector

- FIBER OPTIC PIGTAIL.
- PIGTAIL TYPE 1650NM U BAND REFLECTORS



## Mechanical Connector

- MECHANICAL FIBER OPTIC CONNECTOR PRE-EMBEDDED TECH

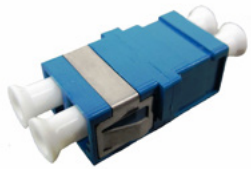


## U-Band Reflector

- U-BAND REFLECTOR
- RIFLETTORI FBG MONODIREZIONALI
- RIFLETTORI FBG BIDIREZIONALI
- PIGTAIL TYPE 1650NM U BAND REFLECTORS

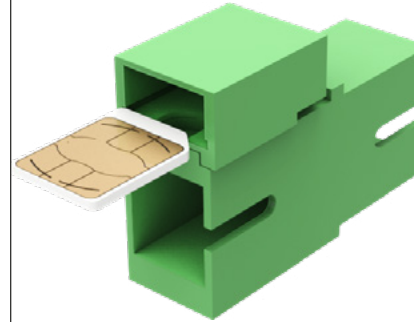
# Optical Passive Components

Out Line S.r.l.



## Adapter

- FIBER OPTIC ADAPTER



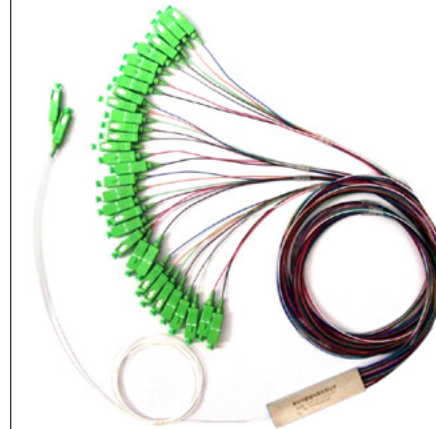
## Smart Adapter

- SMAD



## Attenuator

- FIBER OPTIC ATTENUATOR



## PLC Splitter

- 1XN & 2XN PLC SPLITTER
- MINI STEEL TUBE PLC SPLITTER
- 1XN & 2XN PLC SPLITTER
- PLC SPLITTER PRIMARI
- SPLITTER PLC PRECONNETTORIZZA TO SC/APC COMPATTO



## WDM

- WAVELENGTH DIVISION MULTIPLEXING STEINLESS STEEL CASE
- WAVELENGTH DIVISION MULTIPLEXING PLASTIC CASE



## Mechanical Splice

- FIBER OPTIC MECHANICAL SPLICE



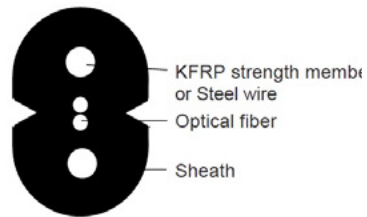


## Fiber Optical Cables



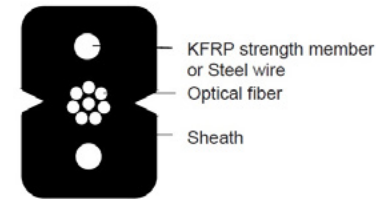
## FRP Cables 1/2 Fibers

- FRP CABLES 1/2 FIBERS



## FRP Cables 8 Fibers

- FRP-CABLE-8-FIBERS







## Fiber Management



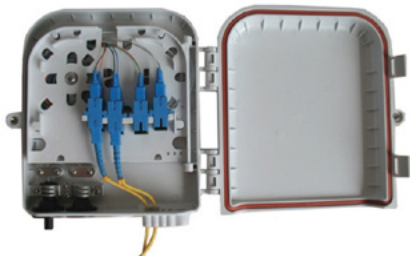
## Fiber Optic Splice Closures

- FTTH DROP CABLE TYPE FIBER OPTIC SPLICE AND SPLITTER CLOSURE
- FIBER OPTIC SPLICE TRAY
- FIBER OPTIC SPLICE CLOSURE



## Fiber Optic Cable Ducts

- CABLE DUCT



## Fiber Optic Distribution/Splicing Boxes

- RDB SPLICING/SPLITTING UP TO 2 FO
- RDB SPLICING/SPLITTING UP TO 4 FO
- RDB SPLICING/SPLITTING UP TO 8 FO
- RDB SPLICING/SPLITTING UP TO 12 FO
- RDB SPLICING/SPLITTING UP TO 16 FO
- RDB SPLICING/SPLITTING UP TO 24 FO
- RDB SPLICING/SPLITTING UP TO 48 FO
- ROE TIM SPLICING/SPLITTING UP TO 8 FO
- ROE TIM SPLICING/SPLITTING UP TO 16 FO
- ROE TIM SPLICING/SPLITTING UP TO 32 FO
- ROE TIM SPLICING/SPLITTING UP TO 48 FO
- PTE OF SPLICING UP TO 24 FO
- PTE OF SPLICING UP TO 48 FO





# Fiber Optic System - FTTH



## Wall Outlet

- 1 FO WALL OUTLET
- 2 FO WALL OUTLET
- 4 FO WALL OUTLET



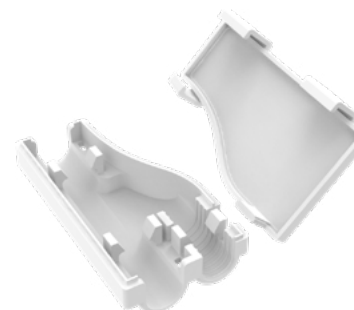
## Floor Distribution Box

- 1 RISER CABLE 8 FO FLOOR DISTRIBUTION BOX
- 2 RISER CABLES 16 FO FLOOR DISTRIBUTION BOX



## Hybrid Wall

- 1 RJ AND 1 SC/LC HYBRID WALL OUTLET
- 1 RJ11, 1 RJ25 AND 1 SC HYBRID WALL OUTLET TIM



## Cable Divider

- 1 TUBE RISER CABLE DIVIDER



A person wearing a dark, quilted puffer jacket is holding a grey, rectangular toolbox. The toolbox has the words "OUT LINE" printed in bold, black, sans-serif capital letters. The person's right hand is resting on the top edge of the toolbox. The background is a plain, light-colored wall.

**OUT LINE**

**Fiber Optic Tools**





## Full Case for Jointers

- FIBER OPTICS - FULL CASE FOR JOINTERS



## Cutting and Stripping Tools

- CUTTING AND STRIPPING TOOLS



## Polishing Tools

- POLISHING TOOLS\_DATASHEET



## Fiber Optic Instruments



## Measuring Instruments OTDR

- FIBER OPTICS - MEASURING  
INSTRUMENTS OTDR



## Easy Splicer

- EASY SPLICER



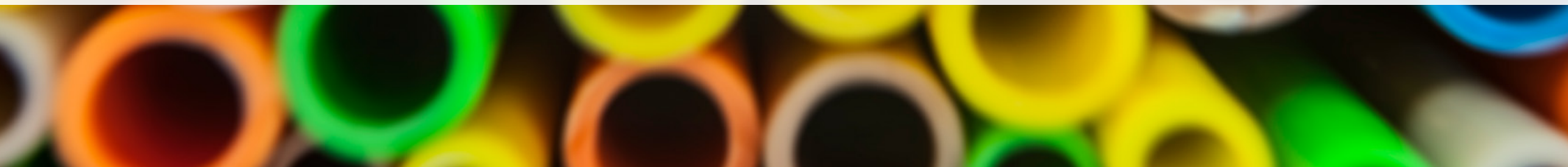
## 740 FTTx Fusion Splicer

- 740 FTTX FUSION SPLICER





## Microducts and Accessories

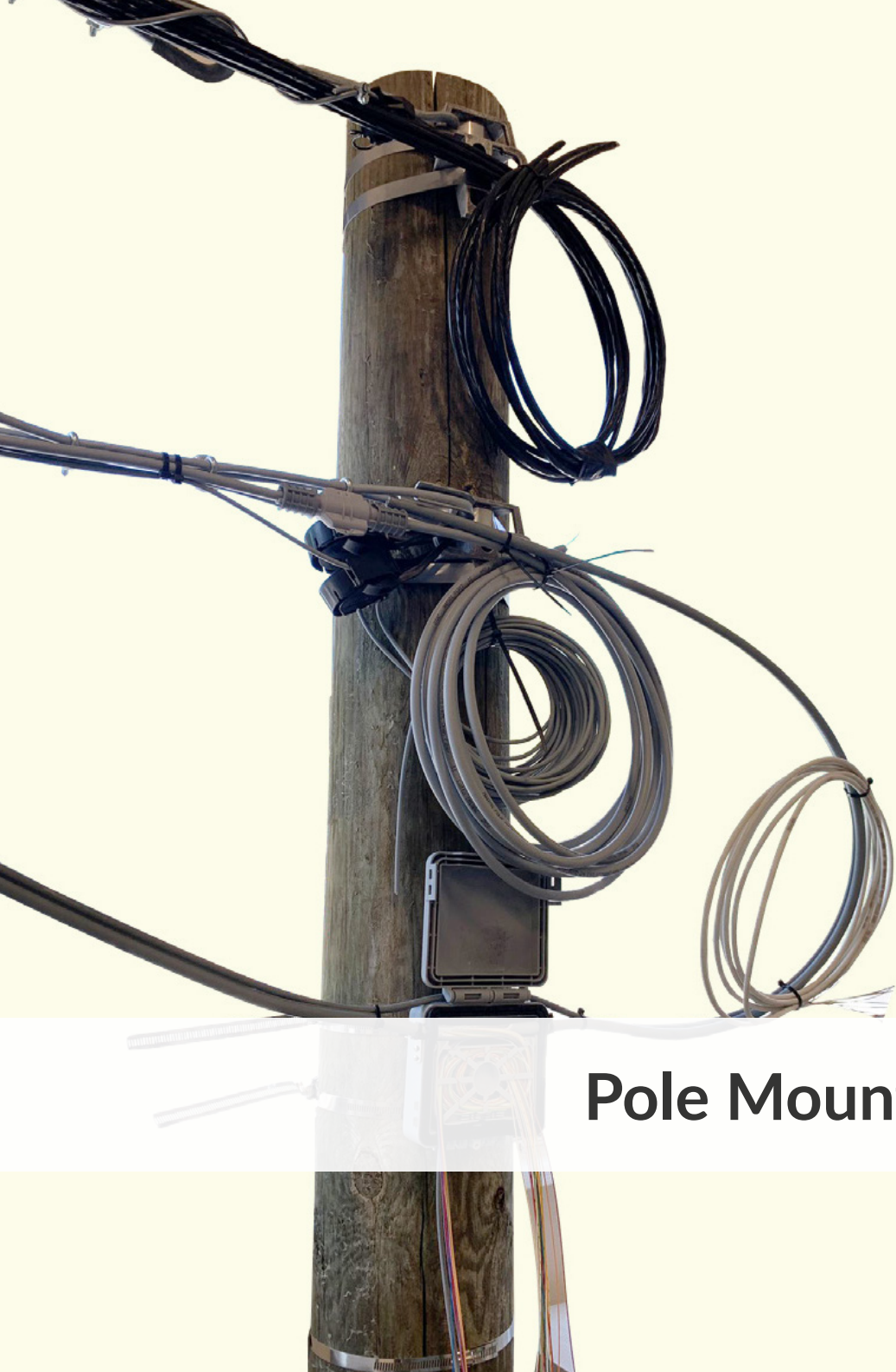




## Micro Ducts

- SPEED PIPE
- BUNDLES
- FENDER
- ACCESSORIES





## Pole Mounting Accessories

# Pole Mounting Accessories

Out Line S.r.l.



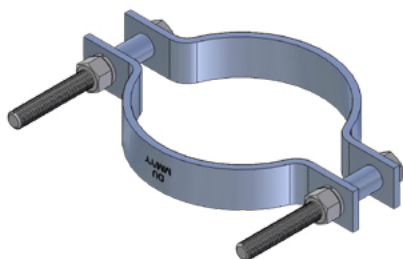
**Fiber distribution box  
for 2/4 UI for aerial or  
wall installation**

---



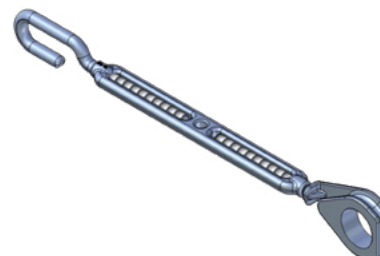
**Fiber distribution box  
for 6 UI for pole or wall  
installation**

---



**Steel Collar**

---



**Tensioner with  
integrated thimble**

---

# Pole Mounting Accessories

Out Line S.r.l.



**Accessories for  
Suspension**

---



**Accessories for  
Suspension**

---



**Accessory for Mooring**

---





**Address:**

Via degli Olmetti 39D  
00060 Formello (RM)

**Phone:**

+39 0690405273

**Email:**

[info@outline.company](mailto:info@outline.company)

[www.outline.company](http://www.outline.company)