



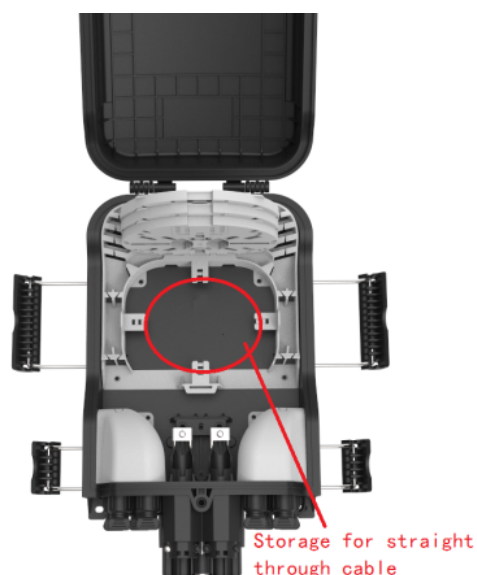
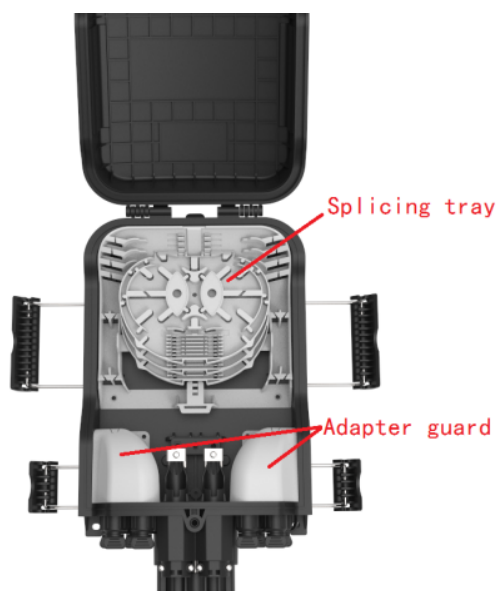
PRODUCT DETAILS

EXTERNAL CASE MATERIAL	GF+PP
INTERNAL CASE MATERIAL	PC+ABS FR
METAL PARTS MATERIAL	SUS304 STAINLESS STEEL
HEIGHT	350mm
LENGHT	200mm
DEPTH	97,5mm
COLOR	RAL9005, other available
PROTECTION LEVEL	IP65, IK09

DESCRIPTION:

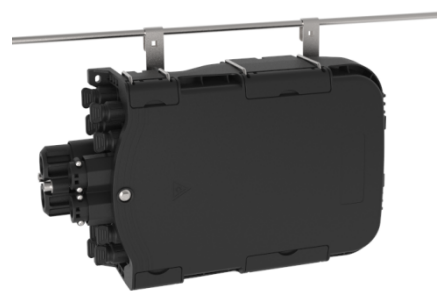
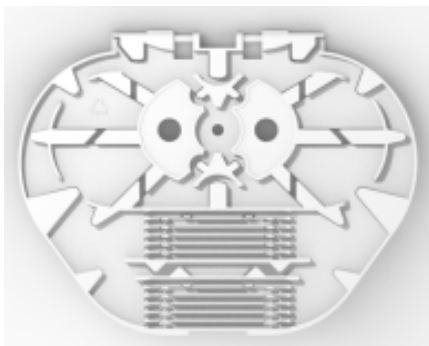
The Street Distribution Point (SDP) Box represents the connecting point of the fibers of the optical cables incoming from aerial distribution cables and drop cables which are terminated at customer's buildings or to connect incoming distribution cables to different outgoing distribution cables.

The internal structure has two covers to save the connection of pigtails, the bottom base for cable entries is right for one loop cable and 2 single cables, on the same bottom base there are 5 circular entrances for ADSS drop cables; the internal part is suitable for 8 splice trays for 12 splices and an extra length manager.



TECHNICAL FEATURES:

- IP65, IK9 case with top opening lid with safety lock, UL94-V0, UV resistance;
- Outdoor (wall or pole) and indoor installation;
- Accessories for pole installation included;
- Available accessories for aerial installation;
- Available accessories for extra-length installation;
- 2 circular entries for a single feeder cable up to 16mm diameter;
- 1 oval entry a feeder for a loop cable up to 18mm diameter;
- 5 circular entries for ADSS drop cables up to 10mm diameter;
- Fiber parking of the network cable;
- Fiber parking of the loop cable
- lid with 180 ° opening;
- 8pcs splice trays (12 standard heatshrinkable tubes) maximum capacity 4mm thickness;
- Elements for guiding and managing the incoming and outgoing fibers with controlled bending radius of no less than 30mm
- NFC standard RFID (ISO-IEC 14443A) is included.



CONFIGURATIONS:

CODE: SDP-AER-SMALL-OPT1

SMALL AERIAL SDP OPTION 1 configuration:

- 2pcs grey splice trays preinstalled;
- 2pcs blue splice trays preinstalled;
- 1pcs red splice trays preinstalled.

CODE: SDP-AER-MEDIUM-OPT1

MEDIUM AERIAL SDP OPTION 1 configuration:

- 2pcs grey splice trays preinstalled;
- 4pcs blue splice trays preinstalled;
- 2pcs red splice trays preinstalled.

CODE: SDP-AER-LARGE-OPT1

LARGE AERIAL SDP OPTION 1 configuration:

- 2pcs grey splice trays preinstalled;
- 4pcs blue splice trays preinstalled;
- 2pcs red splice trays preinstalled.