

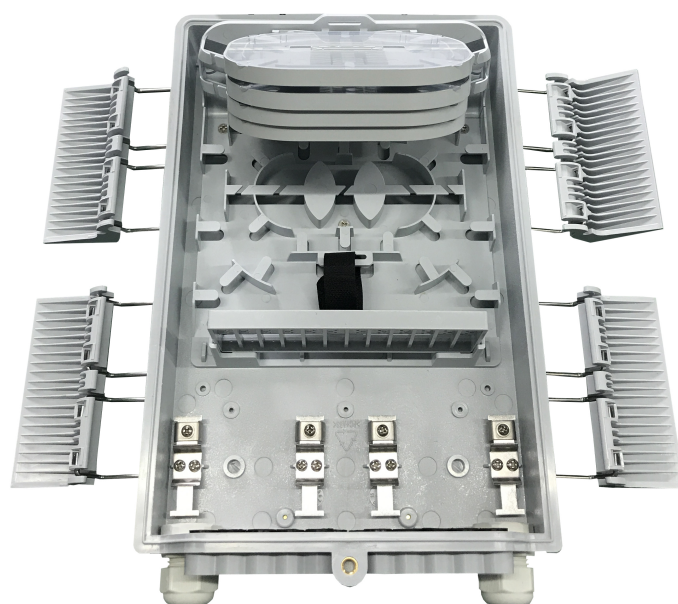
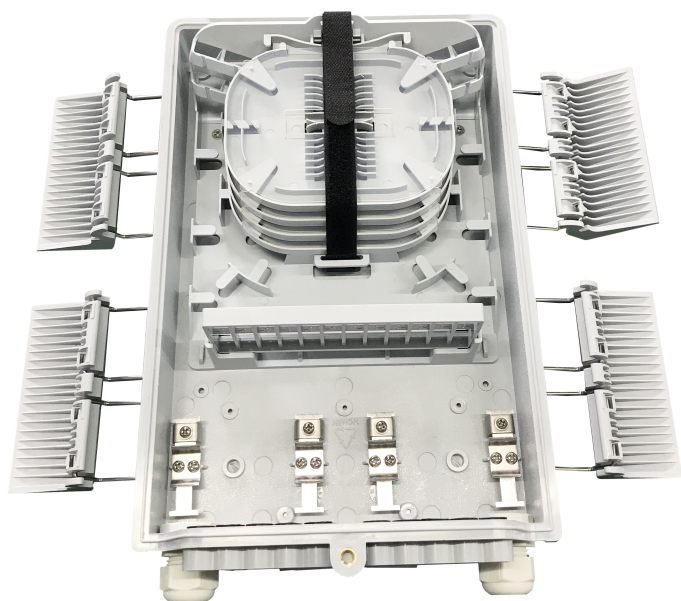


PRODUCT DETAILS

EXTERNAL CASE MATERIAL	GF+PP
INTERNAL CASE MATERIAL	PC+ABS FR
METAL PARTS MATERIAL	SUS304 STAINLESS STEEL
HEIGHT	330mm
LENGTH	210mm
DEPTH	87mm
COLOR	RAL7035, other available
PROTECTION LEVEL	IP65, IK09

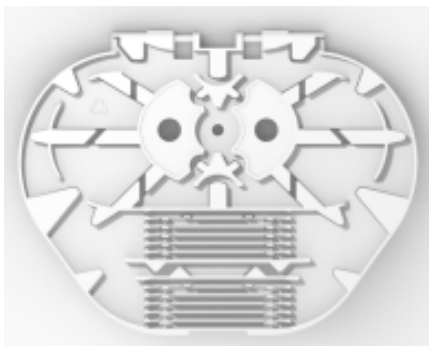
DESCRIPTION:

The Building Distribution Point (SDP) Box represents the termination point of the fibers of the optical cables incoming from horizontal network within a building with more than 3 HousHolds and it's used as a bridge between horizontal network and vertical network. It's generally located near to the building. It's used only for one operator. The bottom base for cable entries is right for one loop cable and 2 single cables, on the same bottom base there are 16 circular entrances for drop cables; the internal part is suitable for 8 splice trays for 12 splices and an extra length manager.



TECHNICAL FEATURES:

- IP65, IK9 case with top opening lid with safety lock, UL94-V0, UV resistance;
- Outdoor (wall or pole) and indoor installation;
- Available accessories for pole installation;
- Available accessories for aerial installation;
- Available accessories for extra-length installation;
- 2 circular entries for a single feeder cable up to 10mm diameter;
- 1 oval entry a feeder for a loop cable up to 10mm diameter;
- 16 circular entries for drop cables up to 5mm diameter;
- Fiber parking of the network cable;
- Fiber parking of the loop cable
- lid with 180 ° opening;
- 8pcs splice trays (12 standard heatshrinkable tubes) maximum capacity 4mm thickness;
- Elements for guiding and managing the incoming and outgoing fibers with controlled bending radius of no less than 30mm
- NFC standard RFID (ISO-IEC 14443A is included).

**CONFIGURATIONS:****CODE:** BDP-STD-LARGE-24HH

LARGE STANDARD BDP 24HH configuration:

- 1pc grey splice trays preinstalled;
- 2pcs blue splice trays preinstalled.

