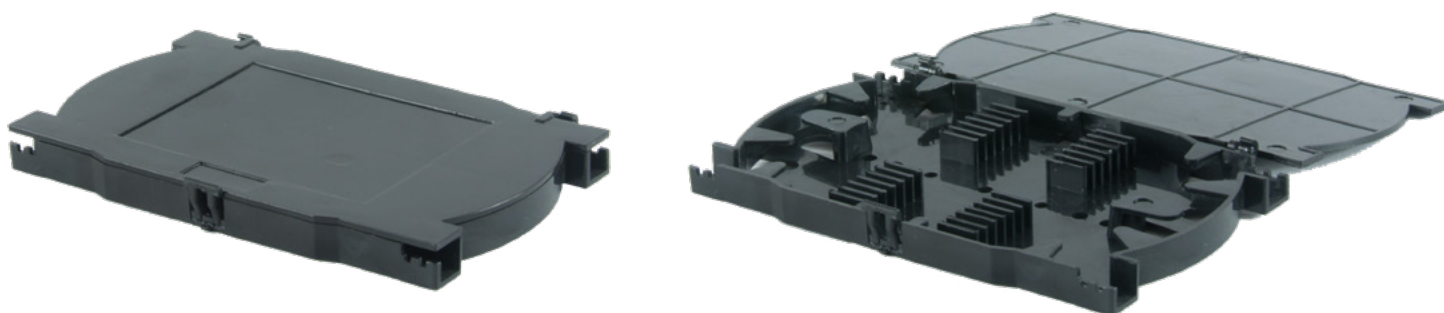


SPLICE TRAY

24 FO BLACK



These splice trays are positioned inside the optical subracks, they can house up to 24 splices, with standard type splice covers, allowing the correct management of the fiber slack of the fibers. They have the possibility to be installed one above on each other, ensuring the opening of each of them, through the hinges that also hook the cover. The cover is included and the product is supplied in black.



PRODUCT CODE

TRAY-STD-SUB-BK / Splice tray 12 FO white dimensions: 156x108x14,6mm

TECHNICAL FEATURES

ALTEZZA	14,6 mm
LARGHEZZA	156 mm
PROFONDITÀ	108 mm
MATERIALE	ABS
COLORE	Nera
PESO	60 GR
TEMPERATURA DI ESERCIZIO	-40 ÷ +60 °C
QUANTITÀ GIUNTI DISPONIBILI	24
DIMENSIONI GIUNTI	Standard