



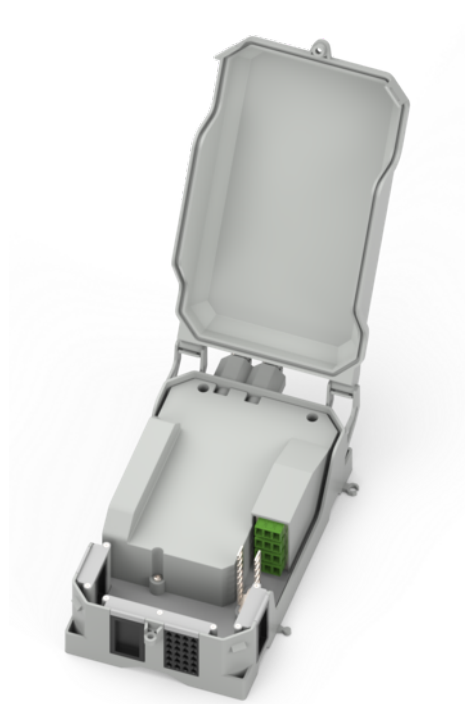
PRODUCT DETAILS	
EXTERNAL CASE MATERIAL	PP+GF
INTERNAL PLASTIC COMPONENTS MATERIAL	PC+ABS FR
INTERNAL METAL COMPONENTS MATERIAL	SUS304 STAINLESS STEEL
HEIGHT	365mm
LENGTH	202mm
DEPTH	121mm
COLOR	RAL7035, other available
PROTECTION LEVEL	IP65, IK09

DESCRIPTION:

The Building Entry Point (BEP) Box represents the termination point of access network serving buildings with less than 3 floors and less than 3 HouseHolds (HHs), It's equipped with connectors.

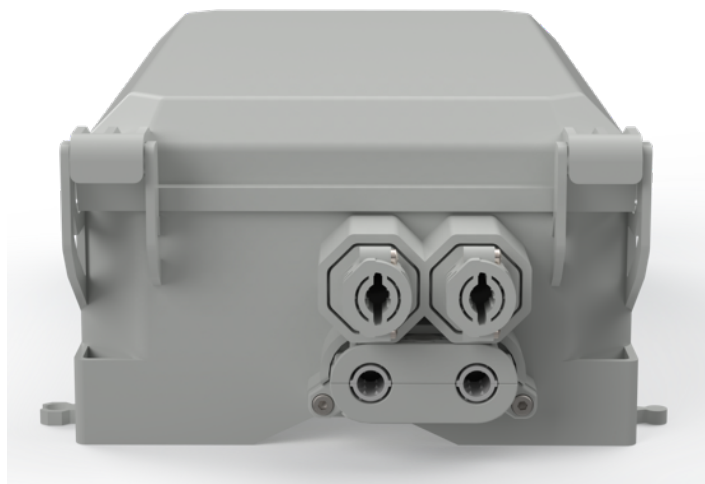
The BEP can be used in case of colocation with Multi Operator Box (MOB) as mutualization point towards MOB for optical continuity between Horizontal Network and HH Connection either for buldings with less than 3 Floors and less than 5 Households either for building with more than 2 Floors and less than 4 Households

Generally, this box is located within the private property of one of the served buildings and it can be installed outside or inside.



TECHNICAL FEATURES:

- IP65, IK9, UL94-V0, UV resistance;
- Wall installation kit included;
- Available accessories for pole installation;
- Entries on the upper side of the box:
 - 1 oval/midspan or 2 circular entries for cables from 6mm up to 12.5mm diameter with proper sealing system and mechanical blocking system for each strength member;
 - 2 additional circular entries used either:
 - o for cables from 6mm up to 12.5mm diameter with proper sealing system and mechanical blocking system for each strength member;
 - o Up to 4 or 5 micro-cables with diameter from 2 mm up to 3 mm with proper sealing system and mechanical blocking system for each strength member;



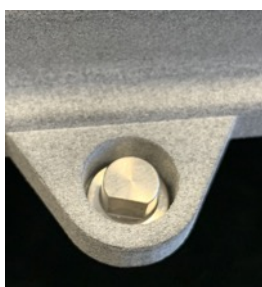
- Entries on the bottom side of the box:
 - o 24 circular inlets with diameter suitable to handle cables from 2 mm up to 5 mm



- Entries on the sides of the box:
 - On the left side of the box one rectangular entry suitable to handle up to 48 patchcords from one box to another
 - On the right side of the box one rectangular entry suitable to handle up to 48 patchcords from one box to another



- The external cover is 180° opening on the upper side, it can be removable and replaceable without affecting of the internal cabling;
- The external cover is equipped with an anti-theft opening function with special key locking system;
- The keys of the dedicated anti-theft opening solutions will be unique and dedicated to PPC;



Example of external cover lock with key

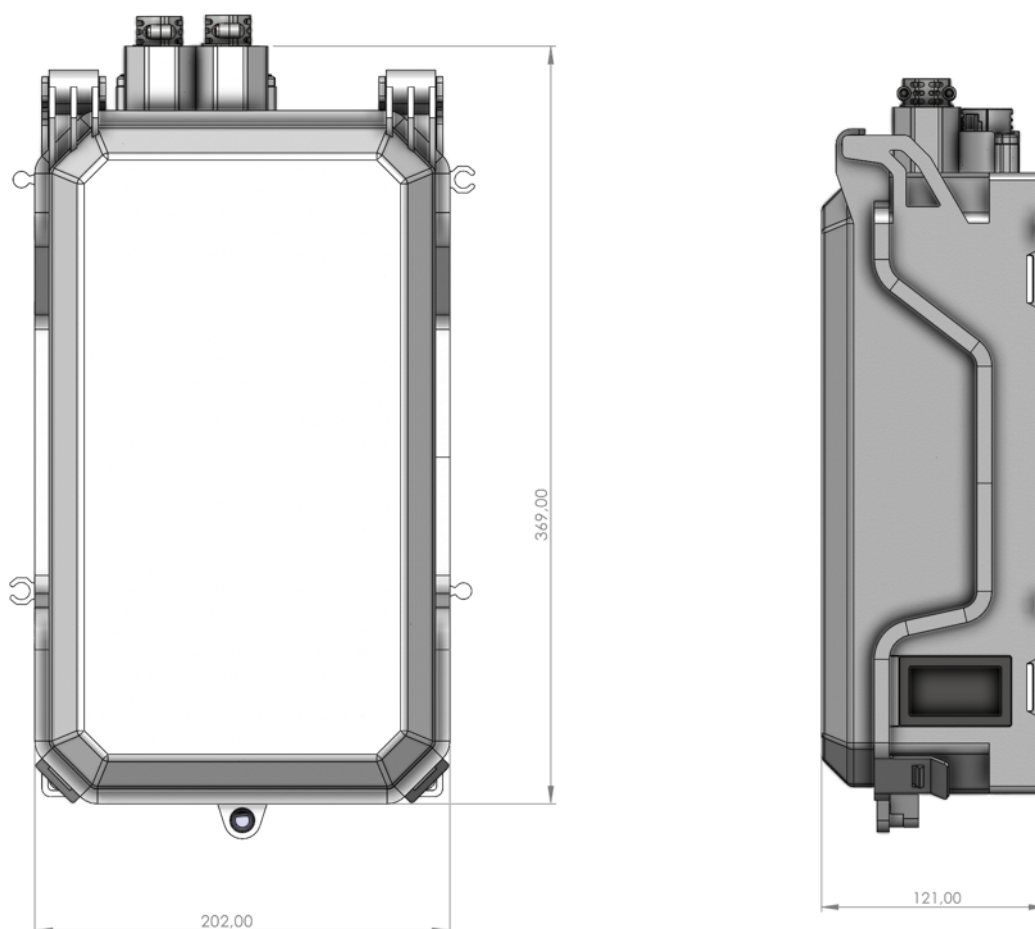


Example of internal cover lock with key

- The box has a closing method with two wings to block and secure the closing system;
- The box equipped with a silicon rubber isolation gasket for perfect sealing;
- BEP has equipped with a cover solution allowing to segregate the node in 2 separate sections and granting access to the sections in a separate way:
 - One external cover that can guarantee the access only for patching operation (with a special key provided)
 - A second internal additional cover that can guarantee the cable entry, splicing and pigtail access (with a special key provided, different from the outer cover)
- Splice tray type for 12 standard heatshrinkable tubes;
- Splice tray can host also 1pcs PLC splitters each;
- Elements for guiding and managing the incoming and outgoing fibers with controlled bending radius of no less than 30mm

- NFC standard RFID (ISO-IEC 14443A) is included.
- This building node can be used either:
 - For wall and façade installation with proper kit included
 - For pole installation (as additional feature) with metal tie wraps not included
- All the accessories needed for operating the product (e.g., tie wraps, Heat-shrink tubes, sealing for midspan inlet, sealing for circular inlets, ...) are included.

DIMENSIONS:



CONFIGURATIONS:**CODE: BEP2-SMALL-2HH**

SMALL BEP BOX 2HH configuration:

- 1pc grey splice tray preinstalled;
- 2pcs 1,5m SC/APC pigtails connected to horizontal permutation rack with 2 SC/APC adapters preinstalled.

CODE: BEP2-SMALL-4HH

SMALL BEP BOX 4HH configuration:

- 1pc grey splice tray preinstalled;
- 4pcs 1,5m SC/APC pigtails connected to horizontal permutation rack with 4 SC/APC adapters preinstalled.

CODE: BEP2-SMALL-8HH

SMALL BEP BOX 8HH configuration:

- 1pc grey splice tray preinstalled;
- 8pcs 1,5m SC/APC pigtails connected to horizontal permutation rack with 8 SC/APC adapters preinstalled.

CODE: BEP2-SMALL-12HH

SMALL BEP BOX 12HH configuration:

- 1pc grey splice tray preinstalled;
- 12pcs 1,5m SC/APC pigtails connected to horizontal permutation rack with 12 SC/APC adapters preinstalled.

PRECONNECTORIZED BEP

Regarding the solution adopted to pre-connect the cable to the optical node, can be used either:

- a pre-connected configuration of the Flexible tubes ADSS Drop Cable, being equipped on one side with SC/APC connectors to be patched inside the BEP (therefore, excluding the presence of pre-installed SC/APC connectors with 900 mm pigtails inside the BEP);
- a standard configuration of the Flexible tubes ADSS Drop Cable, to be factory spliced with the pre-installed SC/APC connectors with 900 mm pigtails inside the BEP



Reference image

CONFIGURATIONS:

CODE: BEP2-SMALL-2HH-ADSS30M

SMALL BEP BOX 2HH with 4FO drop ADSS cable configuration:

- 1pc grey splice tray preinstalled;
- 2pcs 1,5m SC/APC pigtails connected to horizontal permutation rack with 2 SC/APC adapters preinstalled.
- 30m 4FO ADSS drop cable preinstalled (according to Out Line Datasheet DS-OUT-CABLES-ADSS-FLEXDROP-4-48 28/05/2024) and spliced with above pigtails;

CODE: BEP2-SMALL-2HH-ADSS40M

SMALL BEP BOX 2HH with 4FO drop ADSS cable configuration:

- 1pc grey splice tray preinstalled;
- 2pcs 1,5m SC/APC pigtails connected to horizontal permutation rack with 2 SC/APC adapters preinstalled.
- 40m 4FO ADSS drop cable preinstalled (according to Out Line Datasheet DS-OUT-CABLES-ADSS-FLEXDROP-4-48 28/05/2024) and spliced with above pigtails;

CODE: BEP2-SMALL-2HH-ADSS50M

SMALL BEP BOX 2HH with 4FO drop ADSS cable configuration:

- 1pc grey splice tray preinstalled;
- 2pcs 1,5m SC/APC pigtails connected to horizontal permutation rack with 2 SC/APC adapters preinstalled.
- 50m 4FO ADSS drop cable preinstalled (according to Out Line Datasheet DS-OUT-CABLES-ADSS-FLEXDROP-4-48 28/05/2024) and spliced with above pigtails;

CODE: BEP2-SMALL-4HH-ADSS30M

SMALL BEP BOX 4HH with 4FO drop ADSS cable configuration:

- 1pc grey splice tray preinstalled;
- 4pcs 1,5m SC/APC pigtails connected to horizontal permutation rack with 4 SC/APC adapters preinstalled.
- 30m 4FO ADSS drop cable preinstalled (according to Out Line Datasheet DS-OUT-CABLES-ADSS-FLEXDROP-4-48 28/05/2024) and spliced with above pigtails;

CODE: BEP2-SMALL-4HH-ADSS40M

SMALL BEP BOX 4HH with 4FO drop ADSS cable configuration:

- 1pc grey splice tray preinstalled;
- 4pcs 1,5m SC/APC pigtails connected to horizontal permutation rack with 4 SC/APC adapters preinstalled.
- 40m 4FO ADSS drop cable preinstalled (according to Out Line Datasheet DS-OUT-CABLES-ADSS-FLEXDROP-4-48 28/05/2024) and spliced with above pigtails;

CODE: BEP2-SMALL-4HH-ADSS50M

SMALL BEP BOX 4HH with 4FO drop ADSS cable configuration:

- 1pc grey splice tray preinstalled;
- 4pcs 1,5m SC/APC pigtails connected to horizontal permutation rack with 4 SC/APC adapters preinstalled.
- 50m 4FO ADSS drop cable preinstalled (according to Out Line Datasheet DS-OUT-CABLES-ADSS-FLEXDROP-4-48 28/05/2024) and spliced with above pigtails;

CODE: BEP2-SMALL-8HH-ADSS30M

SMALL BEP BOX 8HH with 12FO drop ADSS cable configuration:

- 1pc grey splice tray preinstalled;
- 8pcs 1,5m SC/APC pigtails connected to horizontal permutation rack with 8 SC/APC adapters preinstalled.
- 30m 12FO ADSS drop cable preinstalled (according to Out Line Datasheet DS-OUT-CABLES-ADSS-FLEXDROP-4-48 28/05/2024) and spliced with above pigtails;

CODE: BEP2-SMALL-8HH-ADSS40M

SMALL BEP BOX 8HH with 12FO drop ADSS cable configuration:

- 1pc grey splice tray preinstalled;
- 8pcs 1,5m SC/APC pigtails connected to horizontal permutation rack with 8 SC/APC adapters preinstalled.
- 40m 12FO ADSS drop cable preinstalled (according to Out Line Datasheet DS-OUT-CABLES-ADSS-FLEXDROP-4-48 28/05/2024) and spliced with above pigtails;

CODE: BEP2-SMALL-8HH-ADSS50M

SMALL BEP BOX 8HH with 12FO drop ADSS cable configuration:

- 1pc grey splice tray preinstalled;
- 8pcs 1,5m SC/APC pigtails connected to horizontal permutation rack with 8 SC/APC adapters preinstalled.
- 50m 4FO ADSS drop cable preinstalled (according to Out Line Datasheet DS-OUT-CABLES-ADSS-FLEXDROP-4-48 28/05/2024) and spliced with above pigtails;

CODE: BEP2-SMALL-12HH-ADSS30M

SMALL BEP BOX 12HH with 12FO drop ADSS cable configuration:

- 1pc grey splice tray preinstalled;
- 12pcs 1,5m SC/APC pigtails connected to horizontal permutation rack with 12 SC/APC adapters preinstalled.
- 30m 12FO ADSS drop cable preinstalled (according to Out Line Datasheet DS-OUT-CABLES-ADSS-FLEXDROP-4-48 28/05/2024) and spliced with above pigtails;

CODE: BEP2-SMALL-12HH-ADSS40M

SMALL BEP BOX 12HH with 12FO drop ADSS cable configuration:

- 1pc grey splice tray preinstalled;
- 12pcs 1,5m SC/APC pigtails connected to horizontal permutation rack with 12 SC/APC adapters preinstalled.
- 40m 12FO ADSS drop cable preinstalled (according to Out Line Datasheet DS-OUT-CABLES-ADSS-FLEXDROP-4-48 28/05/2024) and spliced with above pigtails;

CODE: BEP2-SMALL-12HH-ADSS50M

SMALL BEP BOX 12HH with 12FO drop ADSS cable configuration:

- 1pc grey splice tray preinstalled;
- 12pcs 1,5m SC/APC pigtails connected to horizontal permutation rack with 8 SC/APC adapters preinstalled.
- 50m 12FO ADSS drop cable preinstalled (according to Out Line Datasheet DS-OUT-CABLES-ADSS-FLEXDROP-4-48 28/05/2024) and spliced with above pigtails;

SPECIFICATION REFERENCE:

- ΔEH Technical Specification - Building Nodes (BEP, MOB, BDP)
- ΔEH Technical Specification - Pre Conn BEPs
- ΔEH Technical Specification - Extract - Technical Specification 04 - Optical Cables