

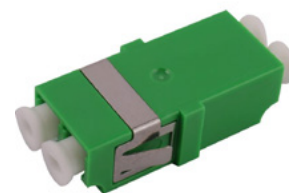
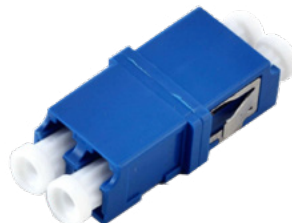
ADAPTER

LC DUPLEX



The LC Duplex Adapter for optical fiber allows a simple and fast connection between 4 LC connectors, it is designed to ensure the alignment between the fibers which maximizes the passage of light inside.

The Adapter can be provided with flanges or without flanges.



PRODUCT CODE

AD-2-LCP-LCP-S-F

AD-2-LCA-LCA-S-F

AD-2-LCP-LCP-S-N

AD-2-LCA-LCA-S-N

WITH FLANGES

FLANGELESS

TECHNICAL FEATURES

DURATION (INSERTION CYCLES)	1000
WORKING TEMPERATURES	da -40C° a +85C°
MATERIALS	UL94-V0
ADAPTER COLOR	
SM PC	Blu
SM APC	Verde
CHARACTERISTICS	
SLEEVE MATERIALS	Zirconia (SM)
TYPICAL INSERTION LOSS (dB)	
SM PC (@1310 - 1550nm)	0,10
SM APC (@1310 - 1550nm)	0,10



DATACENTER



RETE



FTTH