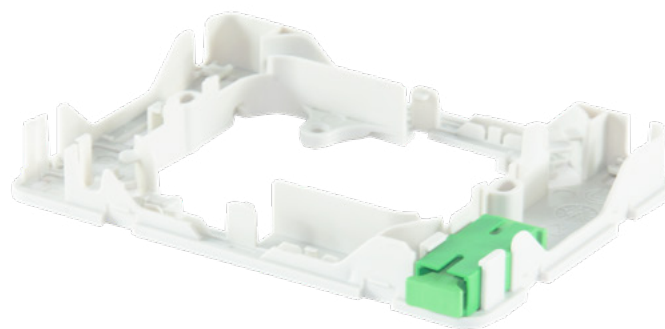




THE PLESIO - UNI 503 has been developed for Italy market, because it is meant to be mounted above an UNI 503 electrical socket box. It is made in a rectangular geometric structure, which follows the perimeter of a standard UNI 503 box. It is equipped with a front cover which has a central break set, once the set is broken the cover can be installed on a UNI 503 box even in the presence of pre-installed electrical sockets. It allows the fixing of the single-fiber cable with 5 entry options, it provides a fiber extra-length management zone with a 900um jacket, it can host standard fusion splice covers in two opposite positions to offer greater flexibility. It also contains n. 1 SC/APC adapter but it can also host shutter type SC/APC adapters. It is possible to install mechanical connectors, Splice-on connectors and optical reflectors inside it.



### PRODUCT CODE

**WO-1F-CORN**

### TECHNICAL FEATURES

MATERIAL	ABS
HEIGHT	86 mm
LENGHT	122 mm
DEPTH	16 mm
COLOR	White
ADAPTER TYPE	SC/APC
COPPER CONNECTION	RJ11 (OPTIONAL)
ADAPTER	SC/APC Flangeless