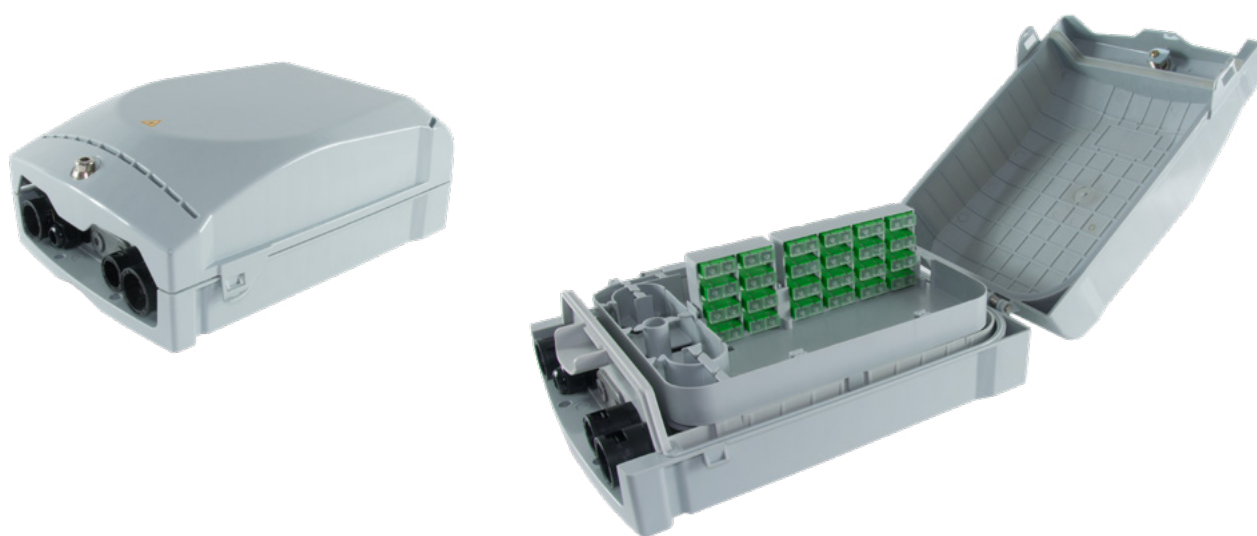


PTE UNI 48 HH is designed for internal and external installation, for the cabling of buildings part of a FTTH architecture network. It has a back-panel appropriately designed so that it can be dismantled and easily assembled/cabled with more comfort in the field. Furthermore, the external case can be replaced in the event of damage, without any service interruption.



PRODUCT CODE

PTE-48-UNI-IE-OL-TIM / PTE UNI 48 HH (NMU 777376) includes n. 24 SC/APC DUPLEX adapters pre-installed in the user's branch.

TECHNICAL FEATURES

HEIGHT	360 mm
LENGHT	260 mm
DEPTH	133 mm
TERMINATION (USER'S BRANCH)	Up to 24 SC/APC Duplex
CABLE ENTRANCES	6
PROTECTION CLASSIFICATION	IP56 – IK10
MATERIAL	ABS/PC
COLOR	Color RAL 7035
LOCK	Sicurvite TYPE