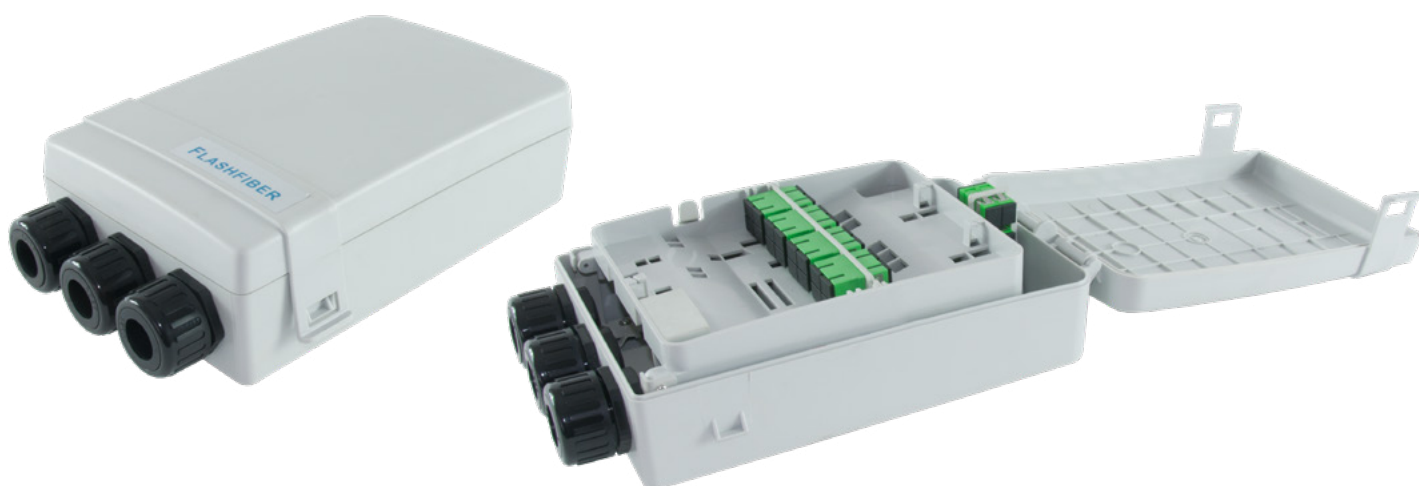


ROE 16 HH is designed for pole or wall installations and is used for Fiber To The Home applications. It can host n. 2 pc of 1x8 PLC splitter (OL code: PLC-1X8-A-09/105-SCA-09/095-SCA-2), and the incoming cable is divided inside the ODB and then distributed to the individual House-Holds (HH).



## PRODUCT CODE

**ROE-16-TIM-FF/** ROE 16 HH (NMU 771783) includes n. 6 SC/APC SIMPLEX adapter pre-installed in the secondary branch and n. 16 SC/APC SIMPLEX adapters pre-installed in the user's branch.

## TECHNICAL FEATURES

HEIGHT	250 mm
LENGHT	150 mm
DEPTH	70 mm
TERMINATION (HORIZONTAL BRANCH)	Up to 6 SC/APC Simplex
TERMINATION (USER'S BRANCH)	Up to 8 SC/APC Duplex
CABLE ENTRANCES	3
PROTECTION CLASSIFICATION	IP56 – IK10
MATERIAL	ABS
COLOR	Color RAL 7035
LOCK	-
PARKNG	4