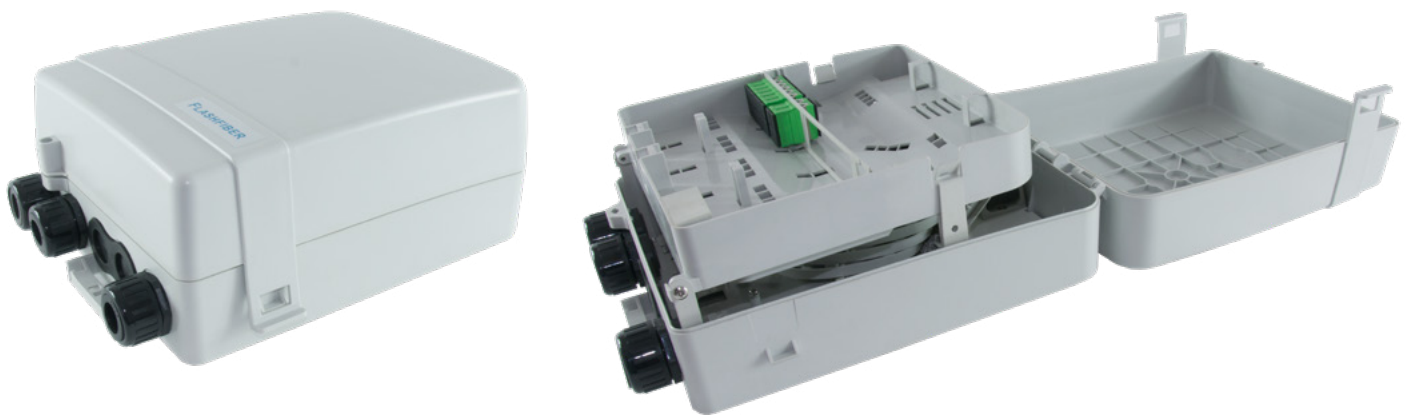




ROE 32 HH is designed for pole or wall installations and is used for Fiber To The Home applications. It can host n. 4 pc of 1x8 PLC splitter (OL code: PLC-1X8-A-09/105-SCA-09/095-SCA-2), and the incoming cable is divided inside the ODB and then distributed to the individual House-Holds (HH).



## PRODUCT CODE

**ROE-32-TIM-FF / ROE 32 HH** (NMU 771784) includes n. 12 SC/APC SIMPLEX adapter pre-installed in the secondary branch and n. 8 SC/APC DUPLEX adapters pre-installed in the user's branch.

## TECHNICAL FEATURES

HEIGHT	300 mm
LENGHT	300 mm
DEPTH	120 mm
TERMINATION (HORIZONTAL BRANCH)	Up to 12 SC/APC SIMPLEX
TERMINATION (USER'S BRANCH)	Up to 16 SC/APC DUPLEX
CABLE ENTRANCES	5
PROTECTION CLASSIFICATION	IP56 - IK10
MATERIAL	ABS
COLOR	Color RAL 7035
LOCK	UPON REQUEST
PARKING	8

