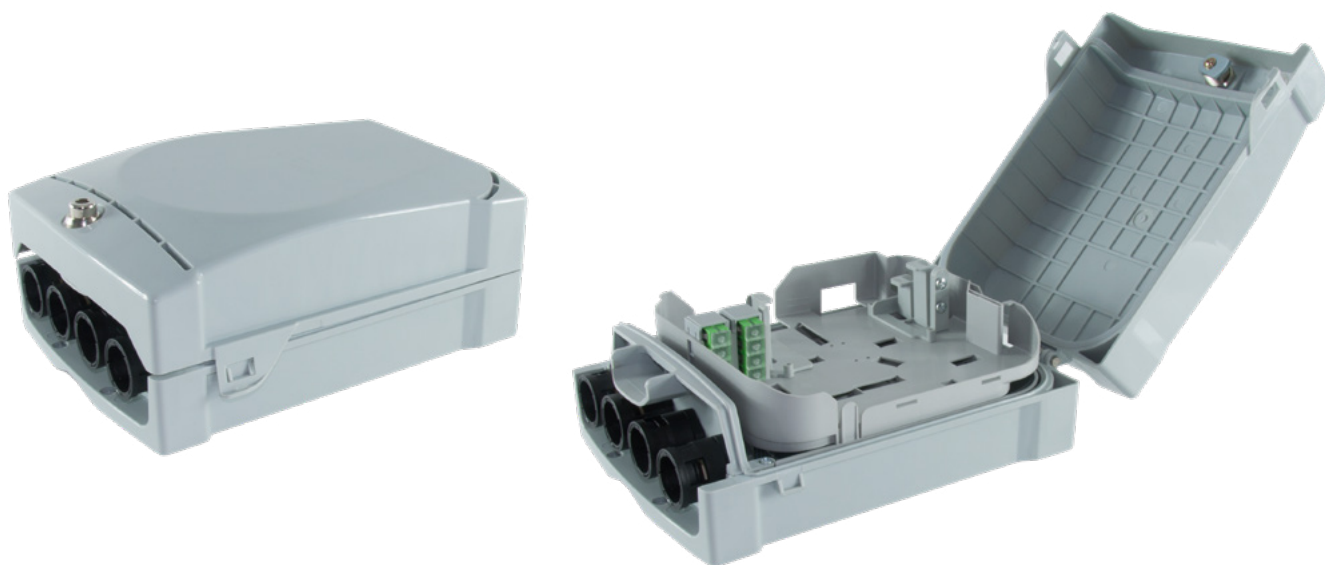




The ROE UNI 16 HH is designed for internal and external installation, for the cabling of buildings part of a FTTH architecture network, it hosts 1X8 plastic splitters (OL CODE: PLC-1X8-A-09/XX-SCA-09/XX-SCA-ROEU). It has a back-panel appropriately designed so that it can be dismounted and easily assembled/cabled with more comfort in the field. Furthermore, the external case can be replaced in the event of damage, without any service interruption.



## PRODUCT CODE

**ROE-16-UNI-IE-OL-TIM** / ROE UNI 16 HH (NMU 777328) includes n. 2 SC/APC DUPLEX adapter pre-installed in the secondary branch and n. 8 SC/APC SIMPLEX adapters pre-installed in the user's branch.

## TECHNICAL FEATURES

HEIGHT	288 mm
LENGHT	215 mm
DEPTH	108 mm
TERMINATION (HORIZONTAL BRANCH)	Up to 2 SC/APC Duplex
TERMINATION (USER'S BRANCH)	Up to 8 SC/APC Simplex
CABLE ENTRANCES	4
PROTECTION CLASSIFICATION	IP56 - IK10
MATERIAL	ABS/PC
COLOR	Color RAL 7035
LOCK	Sicurvite TYPE

